

## MARKERS

OVERVIEW	60
RNA LADDERS	62
DNA LADDERS	63
DNA SIZERS	73
PROTEIN MARKERS	77

## Guide to Ladders, Sizers and Markers

### peqGOLD RNA LADDERS

Product Range	Product Name	Description	Page
RNA Ladders	Low Range, High Range	For qualitative and quantitative analysis of RNA. Bands have identical concentration.	62

### peqGOLD DNA LADDERS

Product Range	Product Name	Description	Page
DNA Ladders	50 bp, 100 bp, 1 kb, Ladder Plus, Ladder Mix	For qualitative and quantitative analysis of DNA. Bands have identical concentration.	63 – 65
Range DNA Ladders	Low Range, High Range, Range Mix	For qualitative and exact quantitative analysis of DNA. Bands have identical concentration.	65 – 66
Orange G DNA Ladders	50 bp, 1 kb, Ladder Plus, Ladder Mix	Ready to use variation of DNA ladders with Orange G dye instead of Bromophenol Blue.	67 – 68
O'range DNA Ladders	50, 100, 500 bp, O'range Mix	For the precise quantitative analysis of DNA. With Orange G dye instead of Bromophenol Blue.	69 – 70
Ultra Low DNA Ladders	Ultra Low Ladder I, Ultra Low Ladder II	For the qualitative and quantitative analysis of smaller DNA fragments. Available 'ready to use'.	71
HT DNA Ladders	Low Range HT, Mid Range HT, High Range HT	For rapid qualitative and quantitative analysis from DNA in high throughput agarose gels.	72 – 73

**Note:** Bromophenol Blue runs at the position of a 400 – 500 bp size fragment in a 1 % agarose gel.  
Orange G runs at the position of a 50 -100 bp size fragment in a 1 % agarose gel.

### peqGOLD DNA SIZERS

Product Range	Product Name	Description	Page
DNA Sizers	DNA Sizer II, III, VI, XI, XII, XIII	Classic DNA ladder for the qualitative and quantitative analysis of DNA	73 – 75
Genome Sizer	Genome Sizer I	For the analysis of genomic DNA in Southern Blots. Free from plasmid DNA.	76

### peqGOLD PROTEIN MARKERS

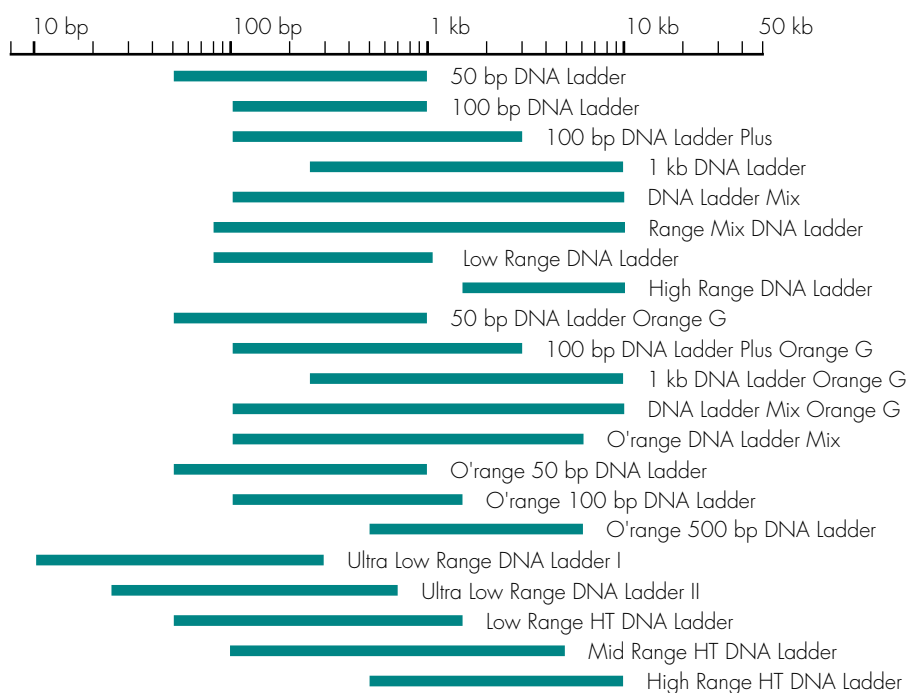
Product Range	Product Name	Description	Page
Unstained Markers	Protein Marker I, II	Proteins from 10 to 200 kDa for SDS-PAGE electrophoresis. Bands can be visualised using Coomassie staining.	77
Prestained Markers	Protein Marker III, IV, V, VI	For use in protein isolation, transfection studies and protein sizing, prestained proteins between 10 and 260 kDa. Each protein is covalently coupled with a colouring agent.	78 – 79

## Size Guide to Ladders, Sizers and Markers

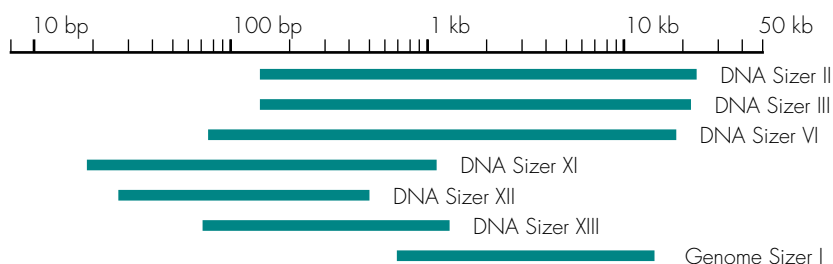
### peqGOLD RNA LADDERS



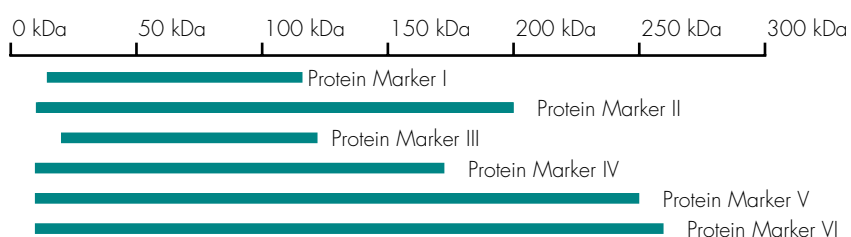
### peqGOLD DNA LADDERS



### peqGOLD DNA SIZERS



### peqGOLD PROTEIN MARKERS



## peqGOLD Low Range RNA Ladder

The peqGOLD Low Range RNA Ladder is a mixture of 7 RNA transcripts from 100 – 1000 bases.

With controlled concentrations (of 70 ng/µl per band) this ladder can be stained with ethidium bromide and is appropriate for quantitative and qualitative RNA agarose and polyacrylamide gels.

Supplied with separate loading buffer or in 'ready to use' format.

### SEPARATION

- Agarose 1.7 - 2.5 %
- Polyacrylamide 4 - 8 %

### STORAGE BUFFER

- The buffer contains 1 mM EDTA (pH 6.0) only

### 2x LOADING BUFFER

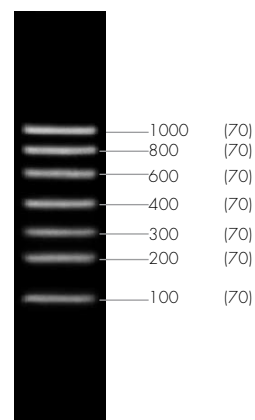
- 95 % Formamide,
- 0.025 % Bromophenol Blue,
- 0.025 % Xylencyanol,
- 0.025 % Ethidium bromide,
- 0.025 % SDS and 0.5 mM EDTA

### RANGE

- 100 – 1000 b

Loading buffer is supplied in 2 x concentration.

0.1 – 1.0 kb (ng/µl)



2 % Formaldehyde-Agarose

### 7 FRAGMENTS

- 1000, 800, 600, 400, 300, 200 and 100 b (at 70 ng/µl)

PRODUCT	BANDS	FRAGMENT SIZE	AMOUNT/VOLUME	LANES	CAT. NO.
Low Range RNA Ladder	7	100 - 1000 b	5 x 10 µg	≥ 50	26-1010
			25 x 10 µg	≥ 250	26-1011
Low Range RNA Ladder (Ready to Use)	7	100 - 1000 b	5 x 40 µl	≥ 50	26-1110
			25 x 40 µl	≥ 250	26-1111

## peqGOLD High Range RNA Ladder

As with the 'Low Range' RNA Ladder but with 8 RNA transcript fragments of 6000 to 200 bases in size, at 60 ng/µl.

Suitable for both agarose and polyacrylamide gels and available with separate loading buffer or in 'ready to use' format.

### STORAGE BUFFER

- The buffer contains 1 mM EDTA (pH 6.0) only

### 2x LOADING BUFFER

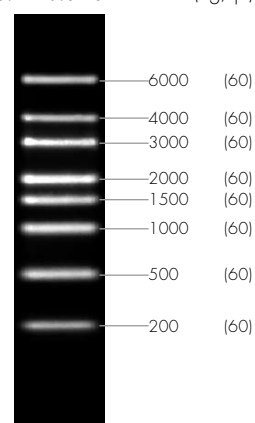
- 95 % Formamide,
- 0.025 % Bromophenol Blue,
- 0.025 % Xylencyanol,
- 0.025 % Ethidium bromide,
- 0.025 % SDS and 0.5 mM EDTA

### RANGE

- 200 – 6000 b

Loading buffer is supplied in 2 x concentration.

0.2 – 6.0 kb (ng/µl)



1 % Formaldehyde-Agarose

### 8 FRAGMENTS

- 6000, 4000, 3000, 2000, 1500, 1000, 500 and 200 b (at 60 ng/µl)

### SEPARATION

- Agarose 0.8 – 1.5 %
- Polyacrylamide 4 – 8 %

PRODUCT	BANDS	FRAGMENT SIZE	AMOUNT/VOLUME	LANES	CAT. NO.
High Range RNA Ladder	8	200 - 6000 b	5 x 10 µg	≥ 50	26-2010
			25 x 10 µg	≥ 250	26-2011
High Range RNA Ladder (Ready to Use)	8	200 - 6000 b	5 x 40 µl	≥ 50	26-2110
			25 x 40 µl	≥ 250	26-2111

## peqGOLD 50 bp DNA Ladder

The peqGOLD 50 bp DNA Ladder includes 13 double stranded DNA fragments, the smallest of which is 50 bp, each highly purified for sharp bands and clear resolution.

With a strong 500 bp and 250 bp band, the ladder enables easy gel orientation and each band is characterised by length and concentration making this ladder suitable for sizing and approximate quantification.

Suitable for use with both agarose and polyacrylamide gels.

### 13 FRAGMENTS

- 1000, 900, 800, 700, 600, 500, 400, 300, 250, 200, 150, 100 and 50 bp

### SEPARATION

- Agarose 1.7 – 2.5 %
- Polyacrylamide 4 – 8 %

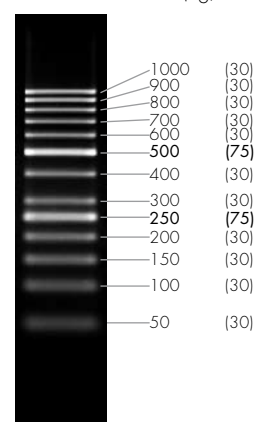
### 6 x LOADING BUFFER

- 10 mM Tris-HCl (pH 7.6), 0.03 % Bromophenol Blue, 0.03 % Xylencyanol, 60 mM EDTA and 60 % Glycerin

### RANGE

- 50 – 1000 bp

0.05 – 1.0 kb (ng/0.5 µg)



2.5 % Agarose

Loading buffer is supplied in 6 x concentration.

PRODUCT	BANDS	FRAGMENT SIZE	AMOUNT/VOLUME	LANES	CAT. NO.
50 bp DNA Ladder	13	50 – 1000 bp	1 x 50 µg	≥ 50	25-2000
			5 x 50 µg	≥ 250	25-2001

## peqGOLD 100 bp DNA Ladder

The 100 bp offers the same clarity as the 50 bp ladder but is composed of 10 fragments, ranging from 1000 down to 100 bp with a stronger 500 bp band to aid gel orientation.

Suitable for use with both agarose and polyacrylamide gels.

### 10 FRAGMENTS

- 1000, 900, 800, 700, 600, 500, 400, 300, 200 and 100 bp

### SEPARATION

- Agarose 1.7 – 2.5 %
- Polyacrylamide 4 – 8 %

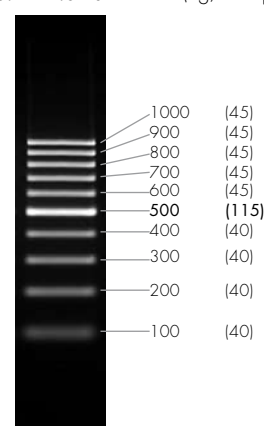
### 6 x LOADING BUFFER

- 10 mM Tris-HCl (pH 7.6), 0.03 % Bromophenol Blue, 0.03 % Xylencyanol, 60 mM EDTA and 60 % Glycerin

### RANGE

- 100 – 1000 bp

0.1 – 1.0 kb (ng/0.5 µg)



1.7 % Agarose

Loading buffer is supplied in 6 x concentration.

PRODUCT	BANDS	FRAGMENT SIZE	AMOUNT/VOLUME	LANES	CAT. NO.
100 bp DNA Ladder	10	100 – 1000 bp	1 x 50 µg	≥ 50	25-2010
			5 x 50 µg	≥ 250	25-2011

## peqGOLD 100 bp DNA Ladder Plus

A ladder with 14 bands ranging from 100 to 3000 bp, the peqGOLD 100 bp DNA Ladder Plus offers a versatile range of band sizes, with sharp, clear, easy to resolve bands. Two bands, 1000 and 500 bp, are included in higher concentration to aid gel orientation, band sizing and simple quantification.

### 14 FRAGMENTS

- 3000, 2000, 1500, 1200, 1000, 900, 800, 700, 600, 500, 400, 300, 200 and 100 bp

### SEPARATION

- Agarose 1.7 - 2.5 %

### 6 x LOADING BUFFER

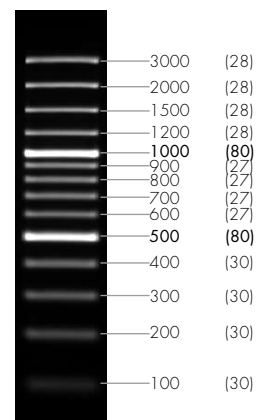
- 10 mM Tris-HCl (pH 7.6),  
0.03 % Bromophenol Blue,  
0.03 % Xylencyanol,  
60 mM EDTA and 60 % Glycerin

### RANGE

- 100 – 3000 bp

Loading buffer is supplied in 6 x concentration.

0.1 – 3.0 kb (ng/0.5 µg)



1.7 % Agarose

PRODUCT	BANDS	FRAGMENT SIZE	AMOUNT/VOLUME	LANES	CAT. NO.
100 bp DNA Ladder Plus	14	100 – 3000 bp	1 x 50 µg	≥ 50	25-2020
			5 x 50 µg	≥ 250	25-2021

## peqGOLD 1 kb Ladder

The peqGOLD 1 kb DNA ladder consists of 14 double stranded DNA fragments, each individually 'cleaned up' for clarity with three orientation bands at 6000, 3000 and 1000 bp.

### 14 FRAGMENTS

- 10000, 8000, 6000, 5000, 4000, 3500, 3000, 2500, 2000, 1500, 1000, 750, 500 and 250 bp

### SEPARATION

- Agarose 0.7 - 1.2 %

### 6 x LOADING BUFFER

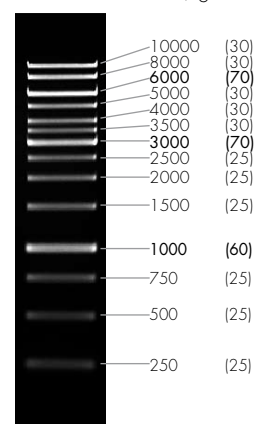
- 10 mM Tris-HCl (pH 7.6),  
0.03 % Bromophenol Blue,  
0.03 % Xylencyanol,  
60 mM EDTA and 60 % Glycerin

### RANGE

- 250 – 10000 bp

Loading buffer is supplied in 6 x concentration.

0.25 – 10.0 kb (ng/0.5 µg)



1.0 % Agarose

PRODUCT	BANDS	FRAGMENT SIZE	AMOUNT/VOLUME	LANES	CAT. NO.
1 kb DNA Ladder	14	250 – 10000 bp	5 x 50 µg	≥ 250	25-2030
			25 x 50 µg	≥ 1250	25-2031

## peqGOLD DNA Ladder Mix

An expansive ladder mix ideal for long and varied electrophoresis, the peqGOLD DNA Ladder Mix includes 21 high clarity bands from 100 bp to 10000 bp including 3 bands of higher concentration for better orientation.

Suitable for use with agarose gels.

### 21 FRAGMENTS

- 10000, 8000, 6000, 5000, 4000, 3500, **3000**, 2500, 2000, 1500, 1200, **1000**, 900, 800, 700, 600, **500**, 400, 300, 200 and 100 bp

### SEPARATION

- Agarose 0.7 – 1.2 %

### 6 x LOADING BUFFER

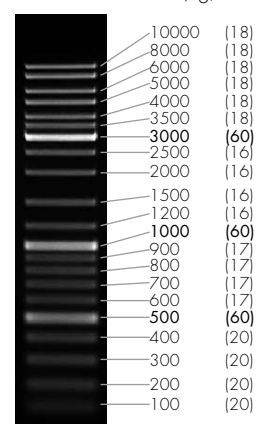
- 10 mM Tris-HCl (pH 7.6), 0.03 % Bromophenol Blue, 0.03 % Xylencyanol, 60 mM EDTA and 60 % Glycerin

### RANGE

- 100 – 10000 bp

Loading buffer is supplied in **6 x concentration**.

0.1 – 10.0 kb (ng/0.5 µg)



1.0 % Agarose

PRODUCT	BANDS	FRAGMENT SIZE	AMOUNT/VOLUME	LANES	CAT. NO.
DNA Ladder Mix	21	100 – 10000 bp	5 x 50 µg	≥ 250	25-2040
			25 x 50 µg	≥ 1250	25-2041

## peqGOLD Range Mix DNA Ladder

This 'Range' Ladder mix offers a sequence of highly quantified bands making this product highly suited for accurate band quantification.

The mix includes 20 bands separated into 3 distinct quantification ranges and is available either with separate loading buffer or in 'ready to use' format.

### 20 FRAGMENTS

- 10000, 8000, 6000, 5000, 4000, 3000, 2500, 2000, 1500, **1031**, 900, 800, 700, 600, **500**, 400, 300, 200, 100 and 80 bp

### SEPARATION

- Agarose 1.0 – 1.2 %

### 6 x LOADING BUFFER

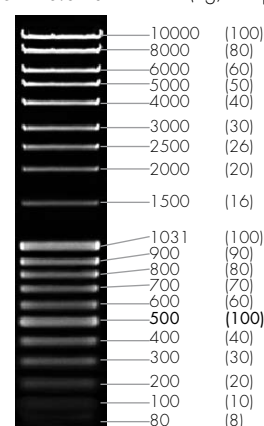
- 10 mM Tris-HCl (pH 7.6), 0.03 % Bromophenol Blue, 60 mM EDTA and 60 % Glycerin

### RANGE

- 80 – 10000 bp

Loading buffer is supplied in **6 x concentration**.

0.08 – 10.0 kb (ng/10 µg)



1.0 % Agarose

PRODUCT	BANDS	FRAGMENT SIZE	AMOUNT/VOLUME	LANES	CAT. NO.
Range Mix DNA Ladder ('Ready to Use')	20	80 – 10000 bp	2 x 0.5 ml	≥ 50	25-2210
			10 x 0.5 ml	≥ 250	25-2211

## peqGOLD Low Range DNA Ladder

For the quantification and sizing of small DNA fragments, the peqGOLD Low Range DNA Ladder is composed of 11 individually purified DNA fragments between 80 and 1031 bp.

The quantity of each fragment is accurately calibrated and the mixture includes a more concentrated band at 500 bp for ease of orientation.

Available with separate loading buffer or in 'ready to use' format with Bromophenol Blue.

### 11 FRAGMENTS

- 1031, 900, 800, 700, 600, 500, 400, 300, 200, 100 and 80 bp

### SEPARATION

- Agarose 1.7 - 2.5 %

### 6 x LOADING BUFFER

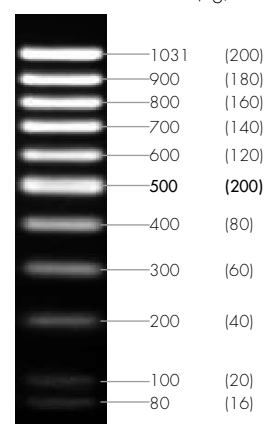
- 10 mM Tris-HCl (pH 7.6), 0.03 % Bromophenol Blue, 60 mM EDTA and 60 % Glycerin

### RANGE

- 80 – 1031 bp

Loading buffer is supplied in 6 x concentration.

0.08 – 1.03 kb (ng/20 µl)



1.7 % Agarose

PRODUCT	BANDS	FRAGMENT SIZE	AMOUNT/VOLUME	LANES	CAT. NO.
Low Range DNA Ladder ('Ready to Use')	11	80 – 1031 bp	2 x 0.5 ml	≥ 50	25-2220
			10 x 0.5 ml	≥ 250	25-2221

## peqGOLD High Range DNA Ladder

Similar to the 'Low Range' Ladder, the peqGOLD High Range DNA Ladder offers 9 highly quantified bands from between 1500 bp and 10000 bp making this product highly suitable for quantifying large DNA fragments on agarose gels. Available with separate loading buffer or in 'ready to use' format with Bromophenol Blue.

### 9 FRAGMENTS

- 10000, 8000, 6000, 5000, 4000, 3000, 2500, 2000 and 1500 bp

### SEPARATION

- Agarose 0.7 - 1.2 %

### 6 x LOADING BUFFER

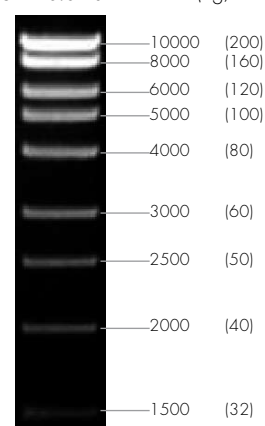
- 10 mM Tris-HCl (pH 7.6), 0.03 % Bromophenol Blue, 60 mM EDTA and 60 % Glycerin

### RANGE

- 1500 – 10000 bp

Loading buffer is supplied in 6 x concentration.

1.5 – 10.0 kb (ng/20 µl)



1.0 % Agarose

PRODUCT	BANDS	FRAGMENT SIZE	AMOUNT/VOLUME	LANES	CAT. NO.
High Range DNA Ladder ('Ready to Use')	9	1500 – 10000 bp	2 x 0.5 ml	≥ 50	25-2230
			10 x 0.5 ml	≥ 250	25-2231

## peqGOLD 50 bp DNA Ladder Orange G

The fast tracking Orange G replaces Bromophenol Blue in this 50 bp ladder for extra clarity.

With 13 individually purified, quantified and sharply resolving bands from 50 to 1000 bp, this ladder contains two more concentrated bands at 250 and 500 bp for ease of orientation. This ladder is suitable for both size regulation and approximate DNA quantification of PCR products and other double stranded DNA molecules in both agarose and polyacrylamide gels.

### 13 FRAGMENTS

- 1000, 900, 800, 700, 600, 500, 400, 300, 250, 200, 150, 100 and 50 bp

### SEPARATION

- Agarose 1.7 – 2.5 %
- Polyacrylamide 4 – 8 %

### 6 x LOADING BUFFER

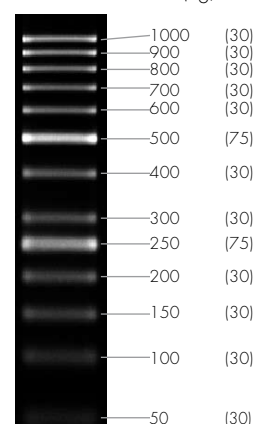
- 10 mM Tris-HCl (pH 7.6), 0.15 % Orange G, 0.03 % Xylencyanol, 60 mM EDTA and 60 % Glycerin

### RANGE

- 50 – 1000 bp

Loading buffer is supplied in 6 x concentration.

0.05 – 1.0 kb (ng/0.5 µg)



2.5 % Agarose

PRODUCT	BANDS	FRAGMENT SIZE	AMOUNT/VOLUME	LANES	CAT. NO.
50 bp DNA Ladder	13	50 - 1000 bp	1 x 50 µg	≥ 100	25-2350
Orange G ('Ready to Use')			5 x 50 µg	≥ 500	25-2351

## peqGOLD 100 bp DNA Ladder Plus Orange G

An extension of the 100 bp Ladder, the peqGOLD 100 bp DNA Ladder Plus Orange G consists of 14 purified and quantified double stranded DNA fragments ranging from 100 to 3000 bp with a more concentrated band at 500 bp and 100 bp. This ladder uses the fast migrating Orange G and is suitable for size regulation and approximate DNA quantification in both agarose and polyacrylamide gels.

### 14 FRAGMENTS

- 3000, 2000, 1500, 1200, 1000, 900, 800, 700, 600, 500, 400, 300, 200 and 100 bp

### SEPARATION

- Agarose 1.7 - 2.5 %

### 6 x LOADING BUFFER

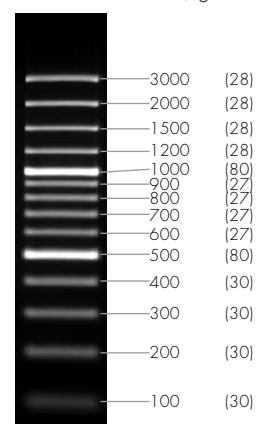
- 10 mM Tris-HCl (pH 7.6), 0.15 % Orange G, 0.03 % Xylencyanol, 60 mM EDTA and 60 % Glycerin

### RANGE

- 100 – 3000 bp

Loading buffer is supplied in 6 x concentration.

0.1 – 3.0 kb (ng/0.5 µg)



1.7 % Agarose

PRODUCT	BANDS	FRAGMENT SIZE	AMOUNT/VOLUME	LANES	CAT. NO.
100 bp DNA Ladder Plus	14	100 - 3000 bp	1 x 50 µg	≥ 100	25-2370
Orange G ('Ready to Use')			5 x 50 µg	≥ 500	25-2371

## peqGOLD 1 kb DNA Ladder Orange G

In common with other Orange G peqGOLD Ladders, the 1 kb Ladder uses Orange G which migrates faster than Bromophenol Blue dye.

The ladder is a mixture of 14 purified and quantified double stranded DNA fragments ranging from 250 to 10 kb with three more concentrated bands for ease of orientation. This ladder is suitable for size regulation and approximate DNA quantification in both agarose and polyacrylamide gels.

### 14 FRAGMENTS

- 10000, 8000, **6000**, 5000, 4000, 3500, **3000**, 2500, 2000, 1500, **1000**, 750, 500 and 250 bp

### SEPARATION

- Agarose 0.7 – 1.2 %

### 6 x LOADING BUFFER

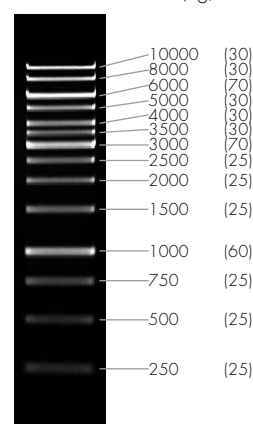
- 10 mM Tris-HCl (pH 7.6), 0.15 % Orange G, 0.03 % Xylencyanol, 60 mM EDTA and 60 % Glycerin

### RANGE

- 250 – 10000 bp

Loading buffer is supplied in 6 x concentration.

0.25 – 10.0 kb (ng/0.5 µg)



1.0 % Agarose

PRODUCT	BANDS	FRAGMENT SIZE	AMOUNT/VOLUME	LANES	CAT. NO.
1 kb DNA Ladder	14	250 – 10000 bp	5 x 50 µg	≥ 500	25-2380
Orange G ('Ready to Use')			25 x 50 µg	≥ 2500	25-2381

## peqGOLD DNA Ladder Mix Orange G

A wide ranging ladder using the fast migrating Orange G dye, the peqGOLD DNA Ladder Mix Orange G uses 21 double stranded fragments from 100 bp right up to 10 kb. Each band is highly purified for sharp band resolution with 3 bands of higher concentration for easy ladder orientation.

This ladder is suitable for size regulation and approximate DNA quantification in both agarose and polyacrylamide gels.

### 21 FRAGMENTS

- 10000, 8000, 6000, 5000, 4000, 3500, **3000**, 2500, 2000, 1500, 1200, **1000**, 900, 800, 700, 600, **500**, 400, 300, 200 and 100 bp

### SEPARATION

- Agarose 0.7 – 1.2 %

### 6 x LOADING BUFFER

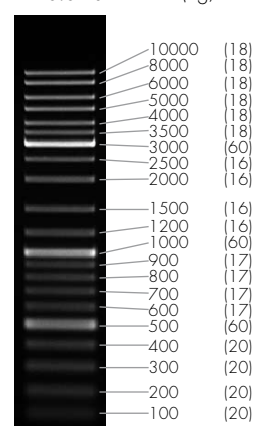
- 10 mM Tris-HCl (pH 7.6), 0.15 % Orange G, 0.03 % Xylencyanol, 60 mM EDTA and 60 % Glycerin

### RANGE

- 100 – 10000 bp

Loading buffer is supplied in 6 x concentration.

0.1 – 10.0 kb (ng/0.5 µg)



1.0 % Agarose

PRODUCT	BANDS	FRAGMENT SIZE	AMOUNT/VOLUME	LANES	CAT. NO.
DNA Ladder Mix	21	100 – 10000 bp	5 x 50 µg	≥ 500	25-2390
Orange G ('Ready to Use')			25 x 50 µg	≥ 2500	25-2391

## peqGOLD Orange DNA Ladder Mix

A composition of 32 fragments made through the ligation of shorter DNA lengths, the peqGOLD Orange DNA Ladder Mix is appropriate for when precise sizing of DNA fragments is most important.

Bands are 100 bp or 500 bp apart and include stronger concentration bands for easy orientation. The loading buffer includes Orange G (instead of Bromophenol Blue) which migrates faster thereby giving extra clarity when visualizing the gel.

(2200), (2100), **2000**, (1900), (1800), (1700), (1600), **1500**, 1400, 1300, 1200, 1100, **1000**, 900, 800, 700, 600, **500**, 400, 300, 200, and 100 bp (darker bands marked in bold)

### SEPARATION

- Agarose 0.7 – 1.2 %

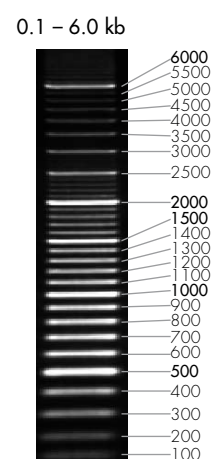
### 6 x LOADING BUFFER

- 10 mM Tris-HCl (pH 7.6),  
0.15 % Orange G,  
0.03 % Xylencyanol,  
60 mM EDTA and 60 % Glycerin

### RANGE

- 100 – 6000 bp

**Loading buffer is supplied in 6 x concentration.**



1.0 % Agarose

### 32 FRAGMENTS

- **6000**, 5500, 5000, 4500, 4000, 3500, 3000, 2500, (2400), (2300),

PRODUCT	BANDS	FRAGMENT SIZE	AMOUNT/VOLUME	LANES	CAT. NO.
Orange DNA Ladder	24	100 – 6000 bp	1 x 0.5 ml	≥ 100	25-2340
Mix ('Ready to Use')			5 x 0.5 ml	≥ 500	25-2341

## peqGOLD Orange 50 bp DNA Ladder

The peqGOLD Orange 50 bp DNA Ladder Mix is highly suited for the precise sizing of small PCR products and other double stranded DNA molecules.

Made through the ligation of smaller DNA lengths, each of the 20 fragments in the Orange is accurately determined, each 50 bp different from the next. Bands are from 50 bp to 1000 bp in length.

The loading buffer includes the fast migrating Orange G instead of Bromophenol Blue for extra clarity.

400, 350, 300, 250, **200**, 150, 100 and 50 bp

### SEPARATION

- Agarose 1.7 – 2.5 %  
- Polyacrylamide 4 – 8 %

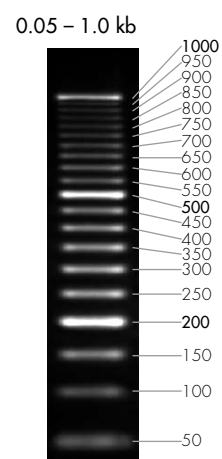
### 6 x LOADING BUFFER

- 10 mM Tris-HCl (pH 7.6),  
0.15 % Orange G,  
0.03 % Xylencyanol,  
60 mM EDTA and 60 % Glycerin

### RANGE

- 50 – 1000 bp

**Loading buffer is supplied in 6 x concentration.**



2.5 % Agarose

### 20 FRAGMENTS

- **1000**, 950, 900, 850, 800, 750, 700, 650, 600, 550, **500**, 450,

PRODUCT	BANDS	FRAGMENT SIZE	AMOUNT/VOLUME	LANES	CAT. NO.
Orange 50 bp DNA Ladder	20	50 – 1000 bp	1 x 0.5 ml	≥ 100	25-2300
('Ready to Use')			5 x 0.5 ml	≥ 500	25-2301

## peqGOLD Orange 100 bp DNA Ladder

In common with the 50 bp O'range Mix, this peqGOLD O'range 100 bp DNA Ladder Mix consists of 15 fragments formed through ligation ranging from 100 bp through to 1500 bp, each differing in length by 100 bp. This product is highly suitable for when accurate sizing of PCR products and other double stranded DNA products is most important.

The loading buffer includes the fast migrating Orange G instead of Bromophenol Blue for extra clarity.

### 15 FRAGMENTS

- 1500, 1400, 1300, 1200, 1100, 1000, 900, 800, 700, 600, 500, 400, 300, 200 and 100 bp

### SEPARATION

- Agarose 1.7 – 2.5 %
- Polyacrylamide 4 – 8 %

### 6 x LOADING BUFFER

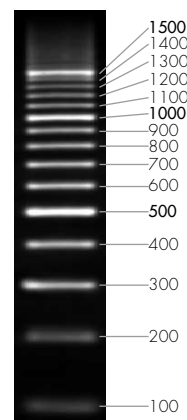
- 10 mM Tris-HCl (pH 7.6), 0.15 % Orange G, 0.03 % Xylencyanol, 60 mM EDTA and 60 % Glycerin

### RANGE

- 100 – 1500 bp

Loading buffer is supplied in 6 x concentration.

0.1 – 1.5 kb



2.5 % Agarose

PRODUCT	BANDS	FRAGMENT SIZE	AMOUNT/VOLUME	LANES	CAT. NO.
O'range 100 bp DNA Ladder ('Ready to Use')	15	100 - 1500 bp	1 x 0.5 ml	≥ 100	25-2310
			5 x 0.5 ml	≥ 500	25-2311

## peqGOLD Orange 500 bp DNA Ladder

As with other products in the O'range, the 500 bp DNA Ladder Mix is a mixture of DNA fragments formed through DNA ligation. This mix contains 12 fragments ranging from 500 to 6000 bp, each very accurately measured making this product appropriate for accurate sizing of PCR products and other lengths of double stranded DNA. The loading buffer includes the fast migrating Orange G instead of Bromophenol Blue for extra clarity.

### 12 FRAGMENTS

- 6000, 5500, 5000, 4500, 4000, 3500, 3000, 2500, 2000, 1500, 1000 and 500 bp

### SEPARATION

- Agarose 0.8 – 1.2 %

### 6 x LOADING BUFFER

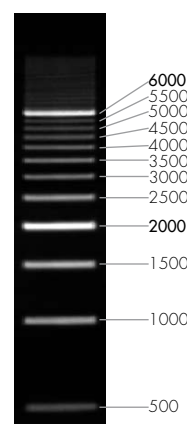
- 10 mM Tris-HCl (pH 7.6), 0.15 % Orange G, 0.03 % Xylencyanol, 60 mM EDTA and 60 % Glycerin

### RANGE

- 500 – 6000 bp

Loading buffer is supplied in 6 x concentration.

0.5 – 6.0 kb



1.0 % Agarose

PRODUCT	BANDS	FRAGMENT SIZE	AMOUNT/VOLUME	LANES	CAT. NO.
Orange 500 bp DNA Ladder ('Ready to Use')	12	500 - 6000 bp	1 x 0.5 ml	≥ 100	25-2330
			5 x 0.5 ml	≥ 500	25-2331

## peqGOLD Ultra Low Range DNA Ladder I

The peqGOLD Ultra Low Range DNA Ladder I consists of 11 double stranded DNA fragments, each individually purified for extra clarity.

With very crisp resolving bands between 10 and 300 bp in length, this ladder is highly suitable for high percentage agarose and polyacrylamide gels. The 50 bp band is at a higher concentration to aid orientation.

This product is available with separate buffer or in 'ready to use' format.

### 11 FRAGMENTS

- 300, 200, 150, 100, 75, 50, 35, 25, 20, 15 and 10 bp

### SEPARATION

- Agarose 4.5 – 5.0 %
- Polyacrylamide 8 – 10 %

### STORAGE BUFFER

- 10 mM Tris-HCl (pH 7.6) and 1 mM EDTA

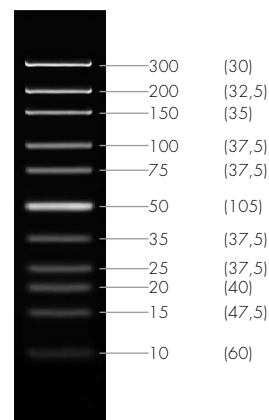
### 6 x LOADING BUFFER

- 10 mM Tris-HCl (pH 7.6), 0.03 % Bromophenol Blue, 0.03 % Xylencyanol, 60 mM EDTA and 60 % Glycerin

### RANGE

- 10 – 300 bp

0.01 – 0.3 kb (ng/0.5 µg)



5 % Agarose

Loading buffer is supplied in 6 x concentration.

PRODUCT	BANDS	FRAGMENT SIZE	AMOUNT/VOLUME	LANES	CAT. NO.
Ultra Low Range DNA Ladder I	11	10 – 300 bp	1 x 50 µg	≥ 50	25-3010
			5 x 50 µg	≥ 250	25-3011
Ultra Low Range DNA Ladder I ('Ready to Use')	11	10 – 300 bp	0.5 ml	≥ 50	25-3110
			5 x 0.5 ml	≥ 250	25-3111

## peqGOLD Ultra Low Range DNA Ladder II

In common with the 'Ladder I', this Ultra Low Range DNA Ladder II is designed for resolution of double stranded DNA in high percentage agarose and polyacrylamide gels. This product includes 10 highly purified fragments from 25 to 700 bp in length with two bands at higher concentration to aid orientation.

This product is available with separate buffer or in 'ready to use' format.

### SEPARATION

- Agarose 2.5 – 3.0 %
- Polyacrylamide 8 – 10 %

### STORAGE BUFFER

- 10 mM Tris-HCl (pH 7.6) and 1 mM EDTA

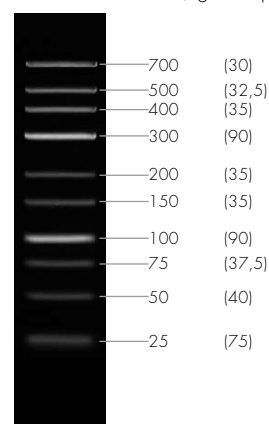
### 6 x LOADING BUFFER

- 10 mM Tris-HCl (pH 7.6), 0.03 % Bromophenol Blue, 0.03 % Xylencyanol, 60 mM EDTA and 60 % Glycerin

### RANGE

- 25 – 700 bp

0.025 – 0.7 kb (ng/0.5 µg)



3.0 % Agarose

Loading buffer is supplied in 6 x concentration.

### 10 FRAGMENTS

- 700, 500, 400, 300, 200, 150, 100, 75, 50 and 25 bp

PRODUCT	BANDS	FRAGMENT SIZE	AMOUNT/VOLUME	LANES	CAT. NO.
Ultra Low Range DNA Ladder II	10	25 – 700 bp	1 x 50 µg	≥ 50	25-4010
			5 x 50 µg	≥ 250	25-4011
Ultra Low Range DNA Ladder II ('Ready to Use')	10	25 – 700 bp	0.5 ml	≥ 50	25-4110
			5 x 0.5 ml	≥ 250	25-4111

## peqGOLD Low Range HT DNA Ladder

A specialist ladder, the Low Range HT DNA Ladder is for use with small separating (10 – 20 mm), high throughput gels providing a clear size regulation and approximate quantification.

This ladder contains 5 individually purified fragments from 50 to 1500 bp which are fully resolved after only 8 to 14 minutes in a 2 % agarose gel.

### 5 FRAGMENTS

- 1500, 850, 400, 200 and 50 bp

### SEPARATION

- Agarose 2.0 %

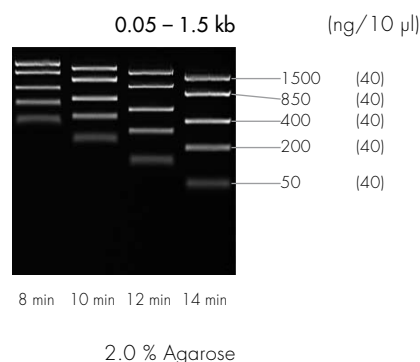
### 6 x LOADING BUFFER

- 10 mM Tris-HCl (pH 7.6),  
0.03 % Bromophenol Blue,  
60 mM EDTA and 60 % Glycerin

### RANGE

- 50 – 1500 bp

Loading buffer is supplied in 6 x concentration.



PRODUCT	BANDS	FRAGMENT SIZE	AMOUNT/VOLUME	LANES	CAT. NO.
Low Range HT DNA Ladder ('Ready to Use')	5	50 - 1500 bp	2 x 0.5 ml 10 x 0.5 ml	≥ 50 ≥ 250	25-2500 25-2501

## peqGOLD Mid Range HT DNA Ladder

As in common with other ladders in this series, the Mid Range HT DNA Ladder is used for small separations (10 – 20 mm) on high throughput gels providing a clear size regulation and approximate quantification.

This ladder contains 5 individually purified fragments from 100 to 5000 bp which are fully resolved after only 8 to 14 minutes in a 2 % agarose gel.

### 5 FRAGMENTS

- 5000, 2000, 850, 400 and 100 bp

### SEPARATION

- Agarose 1.0 %

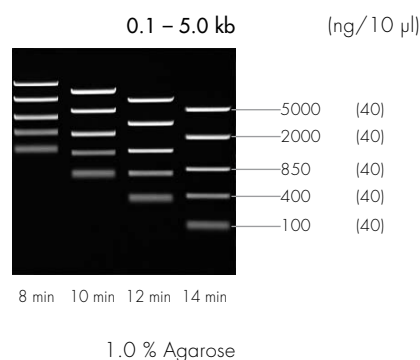
### 6 x LOADING BUFFER

- 10 mM Tris-HCl (pH 7.6),  
0.03 % Bromophenol Blue,  
60 mM EDTA and 60 % Glycerin

### RANGE

- 100 – 5000 bp

Loading buffer is supplied in 6 x concentration.



PRODUCT	BANDS	FRAGMENT SIZE	AMOUNT/VOLUME	LANES	CAT. NO.
Mid Range HT DNA Ladder ('Ready to Use')	5	100 - 5000 bp	2 x 0.5 ml 10 x 0.5 ml	≥ 50 ≥ 250	25-2510 25-2511

## peqGOLD High Range HT DNA Ladder

The High Range HT DNA Ladder is used for small separations (10 – 20 mm) on high throughput gels providing a clear size regulation and approximate quantification.

This ladder contains 5 individually purified fragments from 500 to 10000 bp which are fully resolved after only 8 to 14 minutes in a 2 % agarose gel.

- 5 FRAGMENTS**
- 10000, 4000, 2000, 1000 and 500 bp

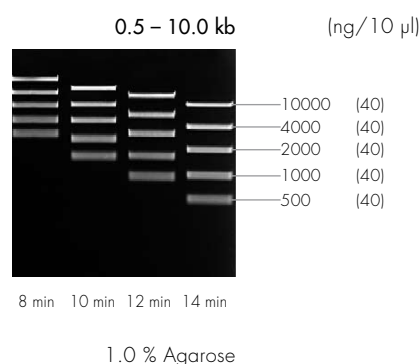
**SEPARATION**

- Agarose 1.0 %
- 6 x LOADING BUFFER**
- 10 mM Tris-HCl (pH 7.6), 0.03 % Bromophenol Blue, 60 mM EDTA and 60 % Glycerin

**RANGE**

- 500 – 10000 bp

Loading buffer is supplied in 6 x concentration.



PRODUCT	BANDS	FRAGMENT SIZE	AMOUNT/VOLUME	LANES	CAT. NO.
High Range HT DNA Ladder ('Ready to Use')	5	500 - 10000 bp	2 x 0.5 ml 10 x 0.5 ml	≥ 50 ≥ 250	25-2520 25-2521

## peqGOLD DNA Sizer II

peqGOLD DNA Sizer II is a conventional Lambda marker for size regulation and approximate quantification of DNA fragments in agarose gels.

In its preparation, λ-DNA (c1857 SAM 7) was totally digested with *Hind* III, purified in organic solvents and stored in Tris-HCl buffer.

**8 FRAGMENTS**

- 23130<sup>1)</sup>, 9416, 6557, 4361<sup>1)</sup>, 2322, 2027, 564 and 125 bp

<sup>1)</sup> see note

**SEPARATION**

- Agarose 1.0 %

**STORAGE BUFFER**

- 10 mM Tris-HCl (pH 7.6) with 1 mM EDTA

**6 x LOADING BUFFER**

- 10 mM Tris-HCl (pH 7.6), 0.03 % Bromophenol Blue, 0.03 % Xylencyanol, 60 mM EDTA and 60 % Glycerin

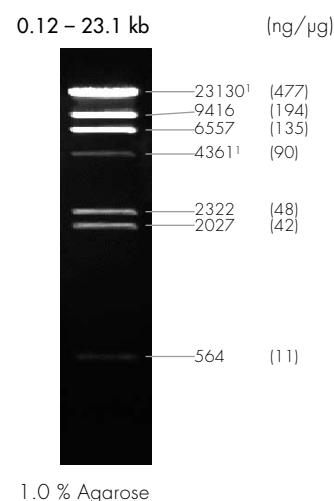
**RANGE**

- 125 - 23130 bp

Loading buffer is supplied in 6 x concentration.

**Note:**

The cohesive ends (the 12 nt cos site of lambda DNA) of the 23130 and 4361 bp may anneal and form additional bands.



These fragments can be separated by heating at 65° C for 5 min and then cooling on ice for 3 min.

PRODUCT	BANDS	FRAGMENT SIZE	AMOUNT/VOLUME	LANES	CAT. NO.
DNA Sizer II	8	125 - 23130 bp	5 x 50 µg 25 x 50 µg	≥ 250 ≥ 1250	25-2060 25-2061

## peqGOLD DNA Sizer III

peqGOLD DNA Sizer III is a conventional Lambda marker for size regulation and approximate quantification of DNA fragments in agarose gels.

In its preparation,  $\lambda$ -DNA (c1857 SAM 7) was totally digested with *EcoR* I and *Hind* III, purified in organic solvents and stored in Tris-HCl buffer.

### 13 FRAGMENTS

- 21226<sup>1</sup>, 5148, 4973, 4268, 3530<sup>1</sup>, 2027, 1904, 1584, 1375, 947, 831, 564 and 125 bp

<sup>1)</sup> see note

### SEPARATION

- Agarose 1.0 %

### STORAGE BUFFER

- 10 mM Tris-HCl (pH 7.6)  
with 1 mM EDTA

### 6 x LOADING BUFFER

- 10 mM Tris-HCl (pH 7.6),  
0.03 % Bromophenol Blue,  
0.03 % Xylencyanol,  
60 mM EDTA and 60 % Glycerin

### RANGE

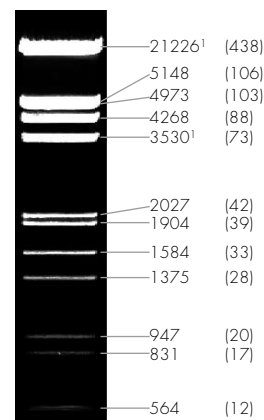
- 125 – 21226 bp

Loading buffer is supplied in  
6 x concentration.

### Note:

The cohesive ends (the 12 nt cos site of lambda DNA) of the 21226 and 3530 bp may anneal and form additional bands. These fragments can be separated by heating at 65°C for 5 min and then cooling on ice for 3 min.

0.1 – 21.2 kb (ng/ $\mu$ g)



1.0 % Agarose

PRODUCT	BANDS	FRAGMENT SIZE	AMOUNT/VOLUME	LANES	CAT. NO.
DNA Sizer III	13	125 – 21226 bp	5 x 50 $\mu$ g	$\geq$ 250	25-2070
			25 x 50 $\mu$ g	$\geq$ 1250	25-2071

## peqGOLD DNA Sizer VI

peqGOLD DNA Sizer VI is a conventional Lambda marker for size regulation and approximate quantification of DNA fragments in agarose gels.

In its preparation,  $\lambda$ -DNA (c1857 SAM 7) was totally digested with *Sfy* I, purified in organic solvents and stored in Tris-HCl buffer.

### 11 FRAGMENTS

- 19329<sup>1</sup>, 7743, 6223, 4254<sup>1</sup>, 3472, 2690, 1882, 1489, 925, 421 and 74 bp

<sup>1)</sup> see note

### SEPARATION

- Agarose 1.0 %

### STORAGE BUFFER

- 10 mM Tris-HCl (pH 7.6)  
with 1 mM EDTA

### 6 x LOADING BUFFER

- 10 mM Tris-HCl (pH 7.6),  
0.03 % Bromophenol Blue,  
0.03 % Xylencyanol,  
60 mM EDTA and 60 % Glycerin

### RANGE

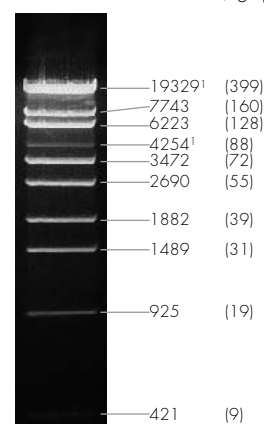
- 74 – 19329 bp

Loading buffer is supplied in  
6 x concentration.

### Note:

The cohesive ends (the 12 nt cos site of lambda DNA) of the 19329 and 4254 bp may anneal and form additional bands. These fragments can be separated by heating at 65°C for 5 min and then cooling on ice for 3 min.

0.07 – 19.3 kb (ng/ $\mu$ g)



1.0 % Agarose

PRODUCT	BANDS	FRAGMENT SIZE	AMOUNT/VOLUME	LANES	CAT. NO.
DNA Sizer VI	11	74 - 19329 bp	5 x 50 $\mu$ g	$\geq$ 250	25-2100
			25 x 50 $\mu$ g	$\geq$ 1250	25-2101

## peqGOLD DNA Sizer XI

For the peqGOLD DNA Sizer XI, pUC19 was digested with *Msp* I and *Dra* I and pUC57 digested with *Hind* III, then purified in organic solvents and stored in Tris-HCl buffer.

Due to its fine band graduations up to 1118 bp, this Sizer is suitable for both size regulation and approximate quantification of double stranded DNA fragments.

### 17 FRAGMENTS

- 1118, 881, 692, 501, 489, 404, 331, 242, 190, 147, 111, 110, 67, 34 (2x), 26 and 19 bp

### SEPARATION

- Agarose 1.7 %
- Polyacrylamide 5 %

### STORAGE BUFFER

- 10 mM Tris-HCl (pH 7.6) with 1 mM EDTA

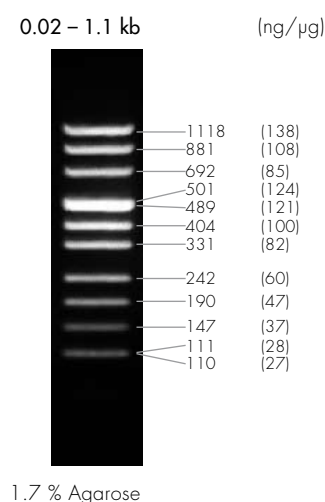
### 6 x LOADING BUFFER

- 10 mM Tris-HCl (pH 7.6), 0.03 % Bromophenol Blue, 0.03 % Xylencyanol, 60 mM EDTA and 60 % Glycerin

### RANGE

- 19 – 1118 bp

Loading buffer is supplied in 6 x concentration.



PRODUCT	BANDS	FRAGMENT SIZE	AMOUNT/VOLUME	LANES	CAT. NO.
DNA Sizer XI	17	19 - 1118 bp	1 x 50 μg	≥ 50	25-2150
			5 x 50 μg	≥ 250	25-2151

## peqGOLD DNA Sizer XII

For the peqGOLD DNA Sizer XII, pUC19 plasmid was digested with *Hpa* II, purified in organic solvents and stored in Tris-HCl buffer.

Due to its fine band graduations up to 500 bp, this Sizer is suitable for both size regulation and approximate quantification of double stranded DNA fragments.

### 13 FRAGMENTS

- 501, 489, 404, 331, 242, 190, 147, 111, 110, 67, 34 (2x) and 26 bp

### STORAGE BUFFER

- 10 mM Tris-HCl (pH 7.6) with 1 mM EDTA

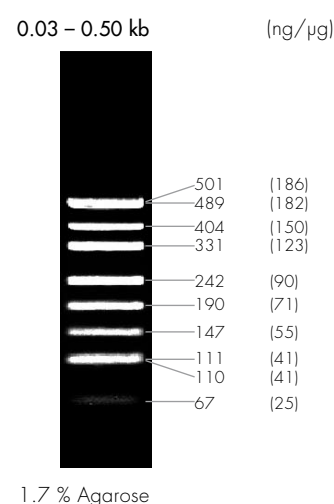
### 6 x LOADING BUFFER

- 10 mM Tris-HCl (pH 7.6), 0.03 % Bromophenol Blue, 0.03 % Xylencyanol, 60 mM EDTA and 60 % Glycerin

### RANGE

- 26 – 501 bp

Loading buffer is supplied in 6 x concentration.



PRODUCT	BANDS	FRAGMENT SIZE	AMOUNT/VOLUME	LANES	CAT. NO.
DNA Sizer XII	13	26 - 501 bp	1 x 50 μg	≥ 50	25-2160
			5 x 50 μg	≥ 250	25-2161

## peqGOLD DNA Sizer XIII

For the peqGOLD DNA Sizer XIII, the phage  $\Phi$ X174 was digested with *Hae* III, purified in organic solvents and stored in Tris-HCl buffer.

Due to its band graduations up to 1300 bp, this Sizer is suitable for both size regulation and approximate quantification of double stranded DNA fragments.

### 11 FRAGMENTS

- 1353, 1078, 872, 603, 310, 281, 271, 234, 194, 118 and 72 bp

### SEPARATION

- Agarose 1.7 %
- Polyacrylamide 5 %

### STORAGE BUFFER

- 10 mM Tris-HCl (pH 7.6) with 1 mM EDTA

### 6 x LOADING BUFFER

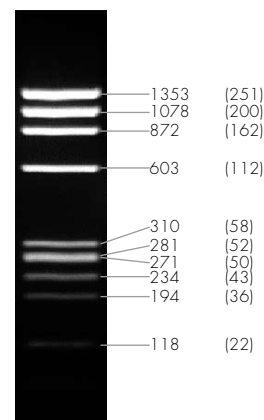
- 10 mM Tris-HCl (pH 7.6), 0.03 % Bromophenol Blue, 0.03 % Xylencyanol, 60 mM EDTA and 60 % Glycerin

### RANGE

- 72 – 1353 bp

Loading buffer is supplied in 6 x concentration.

0.07 – 1.4 kb (ng/ $\mu$ g)



1.7 % Agarose

PRODUCT	BANDS	FRAGMENT SIZE	AMOUNT/VOLUME	LANES	CAT. NO.
DNA Sizer XIII	11	72 - 1353 bp	1 x 50 $\mu$ g	$\geq$ 50	25-2170
			5 x 50 $\mu$ g	$\geq$ 250	25-2171

## peqGOLD Genome Sizer I

peqGOLD Genome Sizer I is for use specifically for the analysis of genomic DNA by Southern Blots.

Free from any plasmid sequences, this ladder is manufactured from digested  $\lambda$  and  $\Phi$ X174 DNA and can be radioactively labelled.

Three stronger bands aid orientation.

### 26 FRAGMENTS

- 14321, 12715, 11933, 9533, 8453, 7242, 6369, 5687, 5220, 4822, 4324, 3976, 3675, 3194, 2804, 2582, 2323, 2121, 1929, 1747, 1570, 1376, 1371, 1264, 1079, 964, 962 and 702 bp

### SEPARATION

- Agarose 0.7 - 1.0 %

### STORAGE BUFFER

- 10 mM Tris-HCl (pH 7.6) with 1 mM EDTA

### 10 x LOADING BUFFER

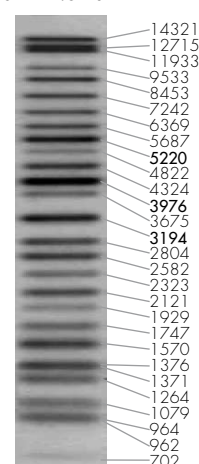
- 0.5 % Bromophenol Blue, 100 mM EDTA and 50 % Glycerin

### RANGE

- 702 – 14321 bp

Loading buffer is supplied in 10 x concentration.

0.70 – 14.3 kb



0.7 % Agarose<sup>1)</sup>

PRODUCT	BANDS	FRAGMENT SIZE	AMOUNT/VOLUME	LANES	CAT. NO.
Genome Sizer I	26	702 - 14321 bp	1 x 6 $\mu$ g	$\geq$ 50	25-2400
			5 x 6 $\mu$ g	$\geq$ 250	25-2401

<sup>1)</sup> Visualisation through radioactive labelling

## peqGOLD Protein Marker I (Unstained)

peqGOLD Protein Marker I was developed for the accurate molecular weight determination of proteins by SDS polyacrylamide gel electrophoresis.

The ladder consists of 7 highly purified proteins, from 14.4 kDa to 116 kDa which can be visualised by staining.

### 7 PROTEINS

- 116.0 kDa ( $\beta$ -Galactosidase from *E. coli*), 66.2 kDa (albumin from blood), 45.0 kDa (hen egg albumin), 35.0 kDa (Lactose dehydrogenase from pig muscle), 25.0 kDa (*Bsp* 98I from *E. coli*), 18.4 kDa ( $\beta$ -lactoglobulin from cow's milk) and 14.4 kDa (lysozyme from hen's eggs)

### SEPARATION

- Polyacrylamide 8 – 15 %

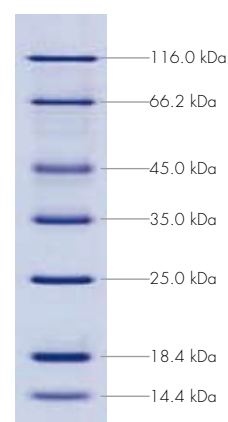
### STORAGE BUFFER

- 62.5 mM Tris-HCl (pH 7.0), 1 mM EDTA, 2 % SDS, 50 mM DTT, 30 mM NaCl, 1 mM NaN<sub>3</sub>, 0.01 % Bromophenol Blue, 50 % Glycerin

### RANGE

- 14.4 – 116.0 kDa

14.4 – 116 kDa



12 % SDS-PAGE

PRODUCT	BANDS	FRAGMENT SIZE	AMOUNT/VOLUME	LANES	CAT. NO.
Protein Marker I	7	14.4 kDa - 116.0	2 x 1.0 ml	≥ 200	27-1010
(Unstained', 'Ready to Use')		kDa	10 x 1.0 ml	≥ 1000	27-1011

## peqGOLD Protein Marker II (Unstained)

peqGOLD Protein Marker II was developed for the accurate molecular weight determination of proteins by SDS polyacrylamide gel electrophoresis.

The ladder consists of 14 highly purified recombinant proteins, from 10.0 kDa to 200 kDa which can be visualised by staining. The 50 kDa protein is present at a higher concentration to aid orientation and identification of the bands.

Each of the proteins contains Streptag® II for subsequent detection.

### 14 FRAGMENTS

- 200, 150, 120, 100, 85, 70, 60, 50, 40, 30, 25, 20, 15 and 10 kDa

### SEPARATION

- Polyacrylamide 8 – 16 %

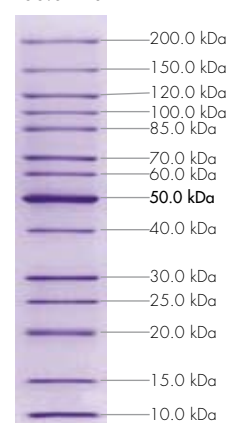
### STORAGE BUFFER

- 62.5 mM Tris-H<sub>3</sub>PO<sub>4</sub> (pH 7.5), 1 mM EDTA, 2 % SDS, 100 mM DTT, 1 mM NaN<sub>3</sub>, 0.01 % Bromophenol Blue and 33 % Glycerin

### RANGE

- 10.0 – 200.0 kDa

10.0 – 200.0 kDa



4 - 20 % SDS-PAGE

PRODUCT	BANDS	FRAGMENT SIZE	AMOUNT/VOLUME	LANES	CAT. NO.
Protein Marker II	14	10.0 kDa - 200.0	2 x 0.25 ml	≥ 50	27-2010
(Unstained', 'Ready to Use')		kDa	10 x 0.25 ml	≥ 250	27-2011

## peqGOLD Protein Marker III (Prestained)

peqGOLD Protein Marker III is for use during SDS polyacrylamide gel electrophoresis and Western Blotting.

Covalently prestained with a blue colouring, the marker is composed of 6 proteins from 20.0 kDa to 122.0 kDa in size.

### 6 PROTEINS

- 122.0 kDa ( $\beta$ -Galactosidase from *E. coli*), 79.0 kDa (albumin from blood), 47.0 kDa (hen egg albumin), 33.0 kDa (Carboanhydrase from cattle

erythrocytes), 24.0 kDa ( $\beta$ -lactoglobulin from cow's milk) and 20.0 kDa (Lysozyme from hen's eggs)

### SEPARATION

- Polyacrylamide 8 – 16 %

### STORAGE BUFFER

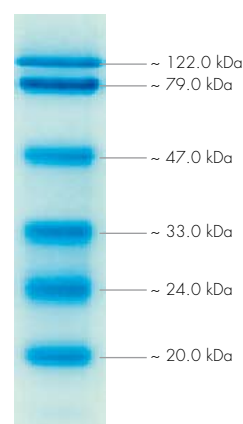
- 62.5 mM Tris-HCl (pH 7.5), 1 mM EDTA, 2 % SDS, 10 mM DTT, 1.5 mM  $\text{NaN}_3$  and 33 % Glycerin

### RANGE

- Polyacrylamide 8 – 16 %

Note that the covalent bonded colouring will affect the actual position of the band enabling only approximate size comparisons with separated proteins.

20.0 – 122.0 kDa



12 % SDS-PAGE

PRODUCT	BANDS	FRAGMENT SIZE	AMOUNT/VOLUME	LANES	CAT. NO.
Protein Marker III	6	20.0 kDa – 122.0 kDa	2 x 0.25 ml	≥ 50	27-1110
(Prestained <sup>1</sup> , Ready to Use)			10 x 0.25 ml	≥ 250	27-1111

## peqGOLD Protein Marker IV (Prestained)

peqGOLD Protein Marker IV is for use during SDS polyacrylamide gel electrophoresis and Western Blotting.

Covalently prestained with a blue colouring, the marker is composed of 10 proteins from 10.0 kDa to 170.0 kDa in size with an additional orange stained 70.0 kDa protein. Together, these clearly defined bands are both easy to orientate and to provide approximate size comparisons.

### 10 PROTEINS

- 170, 130, 100, 70, 55, 45, 35, 25, 15 and 10 kDa

### SEPARATION

- Polyacrylamide 8 – 16 %

### STORAGE BUFFER

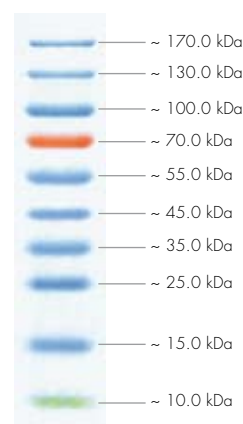
- 62.5 mM Tris- $\text{H}_3\text{PO}_4$  (pH 7.5), 1 mM EDTA, 2 % SDS, 10 mM DTT, 1 mM  $\text{NaN}_3$  and 33 % Glycerin

### RANGE

- 10.0 – 170.0 kDa

Note that the covalent bonded colouring will affect the actual position of the band enabling only approximate size comparisons with separated proteins.

10.0 – 170.0 kDa



8 - 16 % SDS-PAGE

PRODUCT	BANDS	FRAGMENT SIZE	AMOUNT/VOLUME	LANES	CAT. NO.
Protein Marker IV	10	10.0 kDa – 170.0 kDa	2 x 0.25 ml	≥ 50	27-2110
(Prestained <sup>1</sup> , Ready to Use)			10 x 0.25 ml	≥ 250	27-2111

## peqGOLD Protein Marker V (Prestained)

peqGOLD Protein Marker IV is for use during SDS polyacrylamide gel electrophoresis and Western Blotting.

Covalently prestained with a blue colouring, the marker is composed of 9 proteins from 10.0 kDa to 250.0 kDa in size with two orange stained proteins at 72.0 and 28.0 kDa. Together, these clearly defined bands are both easy to orientate and provide approximate size comparisons.

### 9 PROTEINS

- 250, 130, 95, 72, 55, 36, 28, 17 and 10 kDa

### SEPARATION

- Polyacrylamide 8 – 16 %

### STORAGE BUFFER

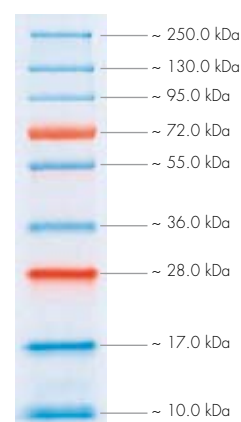
- 62.5 mM Tris-H<sub>3</sub>PO<sub>4</sub> (pH 7.5), 1 mM EDTA, 2 % SDS, 10 mM DTT, 1 mM NaN<sub>3</sub> and 33 % Glycerin

### RANGE

- 10.0 – 250.0 kDa

Note that the covalent bonded colouring will affect the actual position of the band enabling only approximate size comparisons with separated proteins.

10.0 – 250.0 kDa



8 – 16 % SDS-PAGE

PRODUCT	BANDS	FRAGMENT SIZE	AMOUNT/VOLUME	LANES	CAT. NO.
Protein Marker V	9	10.0 kDa – 250.0 kDa	2 x 0.25 ml	≥ 50	27-2210
(Prestained <sup>1</sup> , Ready to Use)			10 x 0.25 ml	≥ 250	27-2211

## peqGOLD Protein Marker VI (Prestained)

peqGOLD Protein Marker VI is a multicoloured, easy to read and ready to use marker composed of 10 bands from 10 kDa up to 260 kDa. Suitable SDS polyacrylamide gel electrophoresis and Western Blotting.

### 10 PROTEINS

- 260, 135, 95, 72, 52, 42, 34, 26, 17 and 10 kDa

### SEPARATION

- Polyacrylamide 4 – 20 %

### STORAGE BUFFER

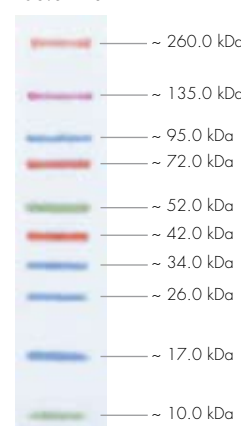
- 62.5 mM Tris-H<sub>3</sub>PO<sub>4</sub> (pH 7.5), 1 mM EDTA, 2 % SDS, 10 mM DTT, 1.0 mM NaN<sub>3</sub> and 33 % Glycerin

### RANGE

- 10.0 – 260.0 kDa

Note that the covalent bonded colouring will affect the actual position of the band enabling only approximate size comparisons with separated proteins.

10.0 – 260.0 kDa



4 – 20 % SDS-PAGE

PRODUCT	BANDS	FRAGMENT SIZE	AMOUNT/VOLUME	LANES	CAT. NO.
Protein Marker VI	10	10.0 kDa – 260.0 kDa	2 x 0.25 ml	≥ 50	27-2310
(Prestained <sup>1</sup> , Ready to Use)			10 x 0.25 ml	≥ 250	27-2311