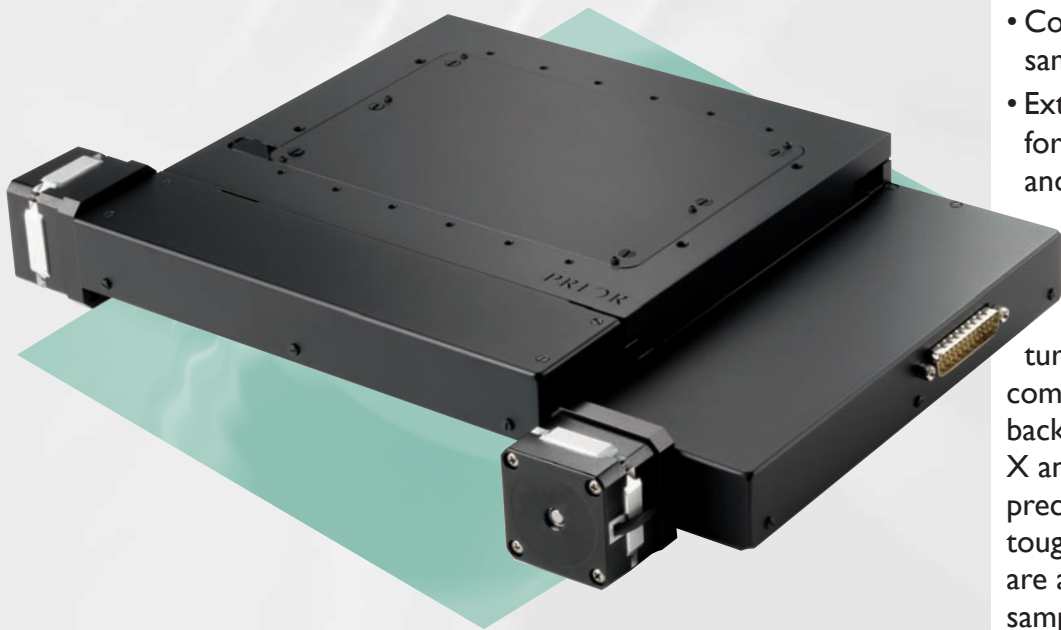


# HT1111LC Stage

## Motorized Stepper Stage for Upright Microscopes



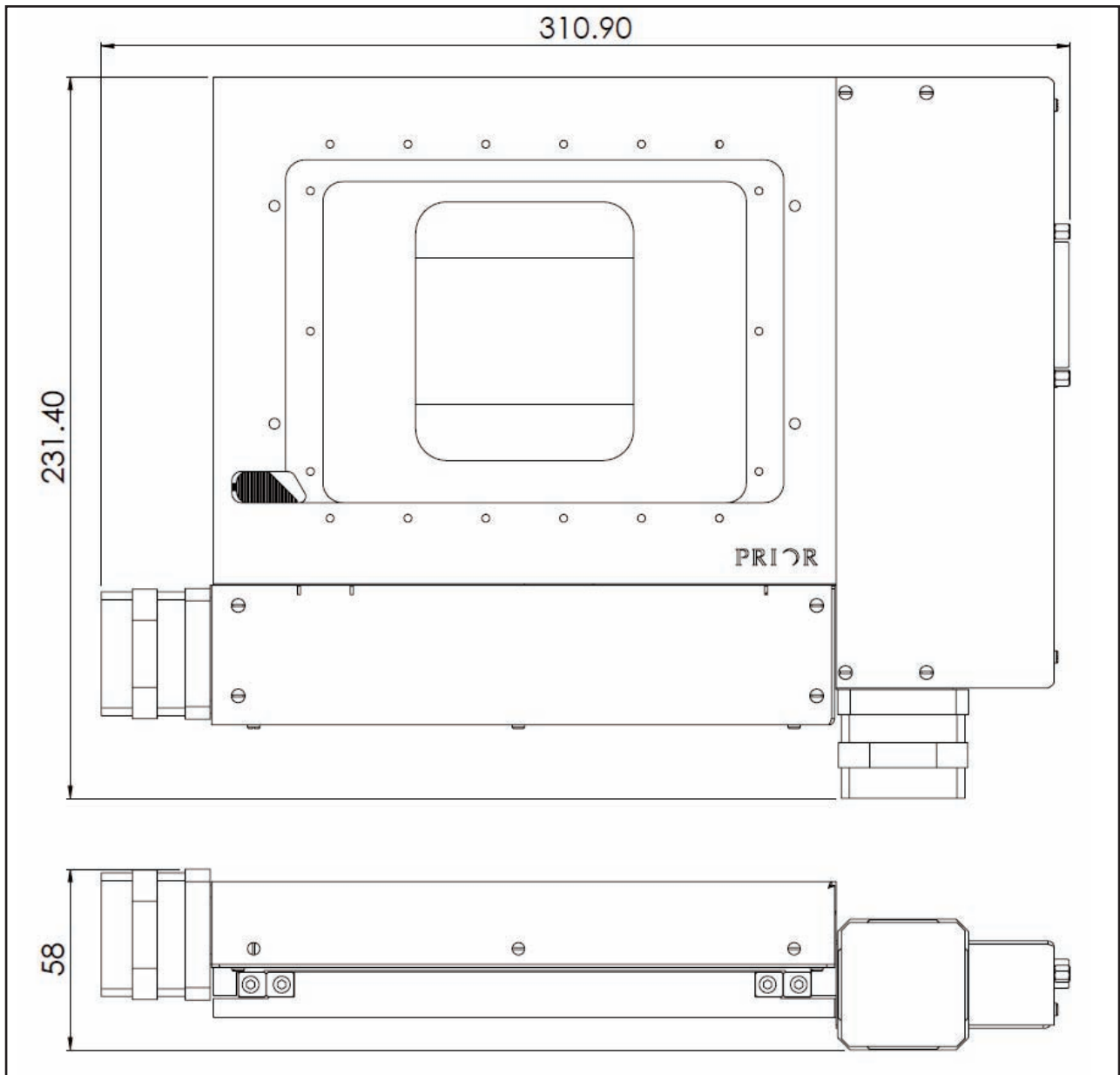
Prior Scientific proudly introduces our latest motorized stage the HT1111LC for high load and other demanding industrial applications.

Major features of the HT1111LC include:

- Designed to handle 100 kg point loads
- 20 nanometer resolution when used with a controller from Prior Scientific
- 108 mm x 108 mm travel
- 1.5 micron repeatability
- Compatible with Prior standard sample holder inserts
- Externally adjustable limit switches for use with a variety of microscopes and testing stands

Prior stages have a well-deserved reputation for quality and repeatability. They are manufactured using the highest quality components: precision bearings, zero backlash recirculating ball screws, X and Y limit switches, two high precision stepper motors even a tough scratch resistant coating. They are available with standard and custom sample holders to suit the user's application and requirements. Stages can be driven by the Prior series of motor controllers or compatible systems in existing OEM configurations. The controller can be accessed via RS-232 serial port or with an optional joystick or keyboard. For the HT1111LC and all its products, Prior provides full support and service both direct and indirect – through a professional, knowledgeable and extensive dealer network.

# HT1111LC Stage



## Stage Ordering Information

<b>HT1111LC</b>	Specify microscope make and model
-----------------	-----------------------------------

## Sample Holder Ordering Information

<b>H649</b>	Holder for 1.0", 1.25" and 1.5" diameter metallurgical specimens
-------------	------------------------------------------------------------------

## General Specifications\*

<b>Travel Range</b>	108 mm x 108 mm
<b>XY Repeatability</b>	1.5 microns
<b>Minimum Step Size (Resolution)</b>	0.02 microns
<b>Load Capacity</b>	100 kg point load

<b>Stepper Motor</b>	4 phase, 1 amp per phase microstepping
<b>Limit Switches</b>	X and Y standard
<b>Stage Profile</b>	Approximately 43.5 mm with solid plate installed
<b>Finish</b>	Electrophoretic black plate

\*Specifications valid only if used with Prior Controller.

PRIOR SCIENTIFIC, INC.  
80 RESERVOIR PARK DRIVE  
ROCKLAND, MA 02370-1062  
T: 781-878-8442  
E: INFO@PRIOR.COM

PRIOR SCIENTIFIC, LTD.  
CAMBRIDGE, UNITED KINGDOM  
T: +44 (0) 01223 881711  
E: UKSALES@PRIOR.COM

**PRIOR**  
scientific

PRIOR SCIENTIFIC GMBH  
JENA, GERMANY  
T: +49 (0)3641675650  
E: VETRIEB@PRIOR.COM

PRIOR SCIENTIFIC KK  
TOKYO, JAPAN  
T: +81 (0)3 5847 8213  
E: INFO-JAPAN@PRIOR.COM

VISIT PRIOR ON THE WEB AT [www.prior.com](http://www.prior.com)