



REMOTE VISUAL INSPECTION

Videoscope Systems

Customers Solution

Videoscopes from 3mm Ø

Flexible Endoscopes from 0.5 mm Ø

Rigid Endoscopes from 1.9 mm Ø

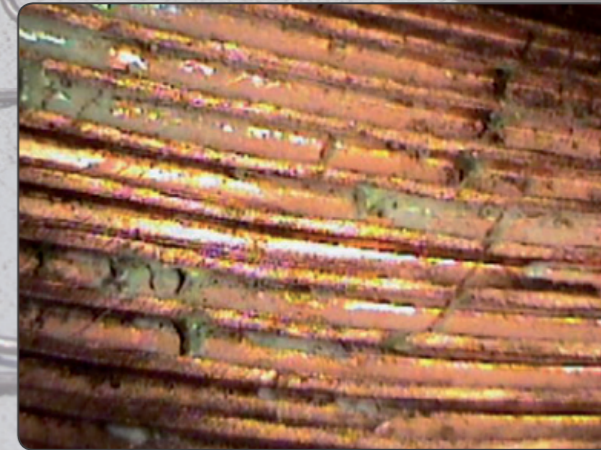
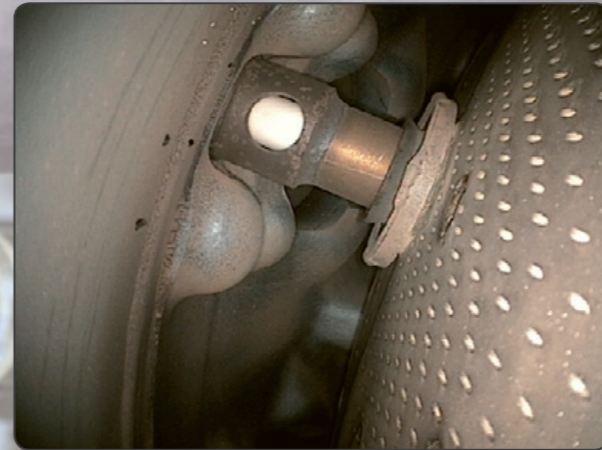
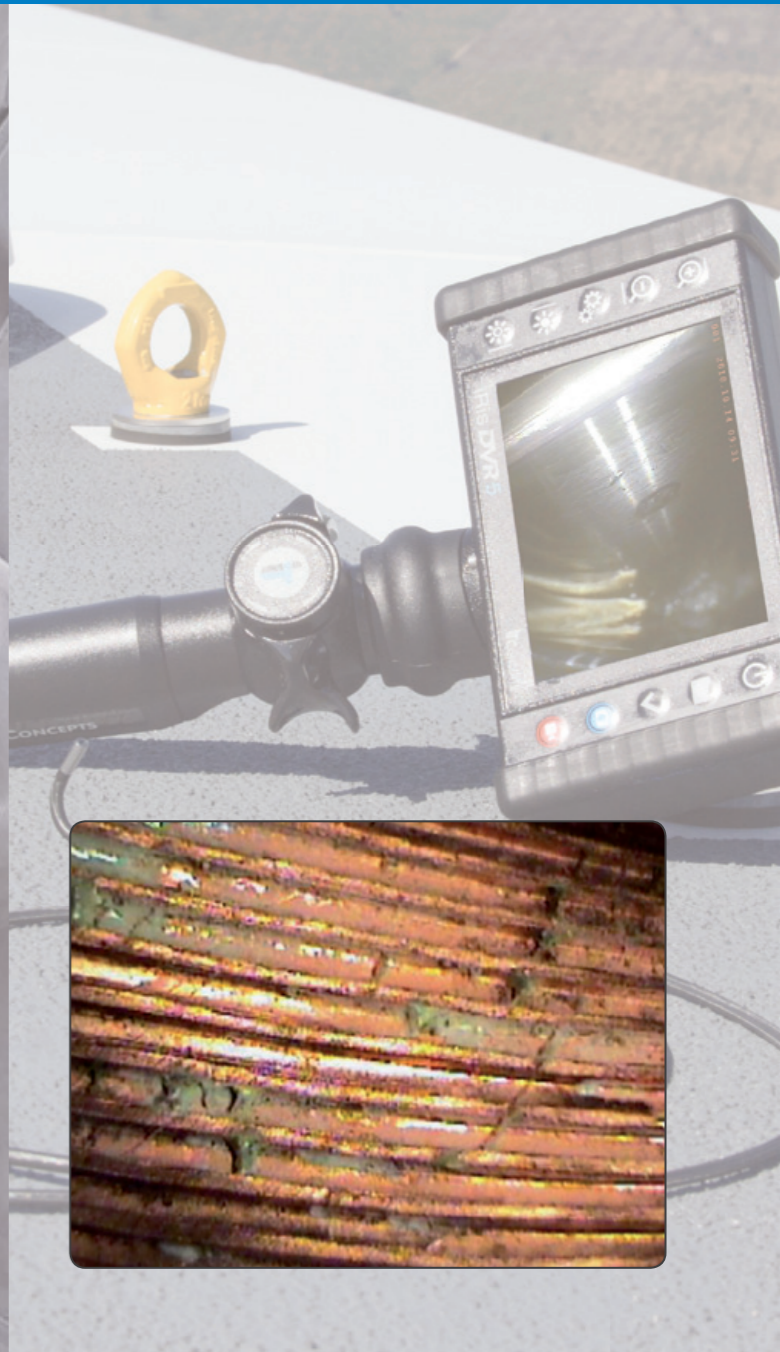
Application Consulting

Special Service Packages

Manufacturing and Service in Germany

Endoscopes

to build your REMOTE VISUAL INSPECTION



iRis DVR 5

Portable Videoscope System



Tactile feedback

Thanks to the non-motorized infinite joystick control, users can navigate the probe responsively with tactile feel and precise tip positioning.

- Bright and high-contrast display
- Excellent image quality
- Rotatable Monitor
- Ergonomic handle
- Precise articulation control
- High Power LED light source
- Temperature resistant up to 140°C

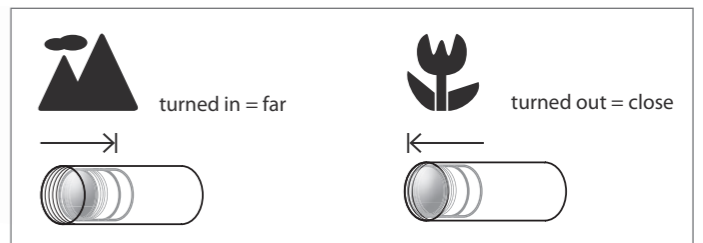
Focusable and interchangeable objectives lens and side view tip adapters

Probe	DOV	FOV	DOF	CODE
4.0mm	0°	60°	7-50mm	
4.0mm	0°	60°	4-10mm	SD
4.0mm	0°	90°	15mm-∞	
4.0mm	0°	90°	10-30mm	SD
4.0mm**	90°	60°	5-45mm	SVTA
6.0mm	0°	60°	5mm-∞	BLACK
6.0mm	0°	60°	8mm-∞	YELLOW-B
6.0mm	0°	90°	5mm-∞	RED
6.0mm	0°	120°	3mm-∞	GREEN
6.0mm**	90°	60°	5-15mm	SVTA-CF
6.0mm**	90°	60°	15-50mm	SVTA-FF
8.0mm	0°	28°	25mm-∞	BLUE
8.0mm	0°	60°	5mm-∞	BLACK
8.0mm	0°	60°	8mm-∞	YELLOW-B
8.0mm	0°	90°	8mm-∞	SILVER-B
8.0mm	0°	90°	5mm-∞	RED
8.0mm**	90°	60°	5mm-∞	SVTA



SMART-FOCUS

Close focus and far focus



DOV = Direction of view CF = Close focus FOV = Field of view FF = Far focus DOF = Depth of focus B = Bright objective lens SVTA = Side view tip adapter (90°DOV) **Compatible to FOV60°

Operating unit

Display size:	5.0" (12.7cm) TFT colour
Display resolution:	VGA (640x480 pixel)
Operating system:	Real-time operating system with on-screen menu Direct action keys / function keys / arrow keys
Languages:	English, German, Polish, French, Spanish, Italian, Turkish
Video interface:	Composite video-out (BNC)
Power supply, primary:	Rechargeable Li-ion battery
Power supply, secondary:	12V adapter (optional accessories)
Documentation	
Video format:	MPEG4 (.avi) (with time and date stamp)
Image format:	BMP (.bmp) (with time and date stamp)
Storage:	SDHC Memory card up to 32GB (FAT32)

Image analysis

Method:	Comparative Measurement
Camera	
Image sensor:	High resolution Super HAD CCD image sensor
Camera control:	White balance, AGC level, Gamma, Shutter, Gain Control, Time exposure
Image control	
Functions:	- 16 step digital zoom - Horizontal and vertical image inversion - Brightness - Contrast - Colour
Text annotation:	Built-in text overlay generator

Probe

Diameter:	4.0 mm	6.0 mm	8.0 mm
Working length:	1.5 - 4.0m	1.5 - 7.5 m	1.5 - 7.5 m
Articulation:	4-way / 360°	4-way / 360°	4-way / 360°
Integrated objective lens:	X	-	-
Interchangeable objective:	-	X	X
Side view tip adapter:	X (60° FOV)	X	X
Braid:	Multi-layer tungsten braid on PU jacket		

Illumination

Type:	High-power LED with high transmission fiberoptics
Illumination control:	3 steps
Colour temperature:	approx. 6500 k.
Average lamp lifetime:	approx. 5000 h

Device

Ergonomics:	± 90° rotatable display, alt. ±90° rotatable handle
Weight:	1.35Kg
Dimensions:	180 mm X 105 mm X 45 mm
Housing:	Rugged PU, with integrated rubber shock caps
Tip operating temperature:	140°C less than 5 Minutes -25°C to +80°C
System operating temperature:	-25°C to +46°C
Storage temperature:	-25°C to +60°C
Relative humidity:	95% less than - non condensing
Waterproof:	Probe and distal End up to 1 bar- 10.2m H2O
Resistance:	Probe and distal End to oils and saline (5%)

iRis DVR X

Portable Videoscope System



Tactile feedback

Thanks to the non-motorized infinite joystick control, users can navigate the probe responsively with tactile feel and precise tip positioning.

+ Extrem economical

Large Display

LED-Beleuchtung

Fast and easy to use

Up to 6 hours operation

Portable

90° Side View Tip Adapter

Economical Repair Service



Documentation unit

Display size:	5.0" (12.7cm) TFT colour
Display resolution:	VGA (640x480 pixel)
Operating system:	Realtime operating system, with on-screen menu
	Direct action keys / function keys / arrow keys
Language:	English, German, Polish, French, Spanish, Italian, Turkish
Video interface:	Composite video-out (BNC)
Power supply, primary:	Rechargeable Li-ion Akku
Power supply, secondary:	12V Adapter (optional accessory)
Storage	
Video format:	MPEG4 (.avi) (with time and date stamp)
Image format:	BMP (.bmp) (with time and date stamp)
Storage:	SDHC Memory card up to 32GB (FAT32)

Image analysis

Method:	Comparative Measurement
Camera	
Image sensor:	AIT CMOS Image sensor
Camera control:	White balance, AGC level, Gamma, Shutter, Gain Control, Langzeitbelluminationung
Image control	
Functions:	- 16 steps digital zoom - Horizontal and vertical image inversion - Brightness - Contrast - Colour
Text annotation:	Built-in text overlay generator

Probe

Diameter:	4.0mm	6.0mm
Working length:	1.5 - 4.0m	1.5 - 7.5m
Articulation:	4-way / 360°	4-way / 360°
Integrated objective:	90° FOV	90°FOV
Side view tip adapter:	-	X
Braid:	Multi-layer tungsten braid on PU jacket	

Illumination

Type:	High power LED (4mm with high transmission fibreoptics / 6mm - LED on the tip)
Illumination control:	3 steps
Colour temperature:	approx. 6500k
Average lamp lifetime:	approx. 5000h

Construction

Ergonomics:	± 90° rotatable display, alt. ±90° rotatable handle
Weight:	1,35Kg
Dimensions:	180mm x 105mm x 45mm
Housing:	Rugged PU, with integrated rubber shock caps
Tip operating temperature:	-13°F to 176°F (-25°C to +80°C)
System operating temperature:	-13°F to 115°F (-25°C to +46°C)
Storage temperature:	-13°F to 140°F (-25°C to +60°C)
Relative humidity:	95% less than - non condensing
Waterproof:	Probe and distal End up to 1 bar- 10.2m H2O
Resistance:	Probe and distal End to oils and saline (5%)

iTool DVR Scalable

Modular Videoscope System



iTool DVR

Modular documentation unit
Extrem flexible in use
High resolution monitor

Station or portable
Interchangeable probes and cameras



iSeries

INTERCHANGEABLE PROBES

INTERCHANGEABLE OBJECTIVES

Model

Connectable to:
iSeries Videoproben
iWC Working Channel
UV Proben
Cube Cam (Faser- and Starres Endoskop)
X-LED Videoproben

Device

Display size: 7" TFT Colour
Display resolution: VGA (640x480 Pixel)
Operating system: Realtime operating system, with on-screen menu
Direct action keys / function keys / arrow keys
Language: English, German, Polish, French, Spanish, Italian, Turkish
Video interface: Composite Video-out, Composite Video-in, S-Video-in
Audio interface: 3.5mm Audio-in / Audio-out

Power supply, primary: 12V via AC-Adapter
Power supply, secondary: 12V via Batterie Belt

Image analysis

Method: Comparative Measurement

Storage

Video format: MPEG4 (.avi) (with time and date stamp)
Image format: BMP (.bmp) (with time and date stamp)
Storage: SD-HC-Memory card up to 32GB (FAT32)

Camera settings

Functions: White balance, AGC level, Gamma, Shutter, Gain Control

Image control

Functions:
- 16 steps digital zoom
- Horizontal and vertical image inversion
- Brightness
- Contrast
- Colour
Text annotation: Built-in text overlay generator

Illumination

Type: 24Watt Metal Halide
Illumination control: stepless/manual
Colour temperature: approx. 6000k
Average lamp lifetime: approx. 500h

Device

Weight: 2,25kg Device / 9,2kg incl. Probe and Case
Dimensions: 290mm x 190mm x 70mm
Housing: Rugged PU
Frame: Alluminium
Tip operating temperature: 14°F to 176°F (-10°C to +80°C)
System operating temperature: -13°F to 113°F (-25°C to +45°C)
Storage temperature: -13°F to 113°F (-25°C to +45°C)
Relative humidity: 95% less than - non condensing

[Interchangeable Probes](#)



iTool DVR IWC WORKING CHANNEL Scalable

Modular Videoscope System

iTool DVR UV Illumination Scalable

Modular Videoscope System



Video interface	• iTool DVR	• iCapture DVR	• USB Frame Grabber	• Composite Video
Connectable to:				
Wechsel-Proben				
Diameter:	4.0mm	6.0mm	8.0mm	
Working length:	1.5m - 4.0m	1.5m - 15m	1.5m - 15m	
Articulation:	4-way / 360°	4-way / 360°	4-way / 360°	
Integrated objective:	x	-	-	
Interchangeable Objectives:	-	x	x	
Working channel (IWC)	-	-	x	
UV version	-	x	x	
Side view tip adapter:	o (**60° FOV)	x	x	
Braid:	Multi-layer tungsten on PU jacket			
Tip operating temperature:	- 13°F to 176°F (-25°C to +80°C) 140°C less than 5 Minutes			
System operating temperature:	- 13°F to 115°F (-25°C to +46°C)			
Storage temperature:	- 13°F to 140°F (-25°C to +60°C)			
Relative humidity:	95% less than - non condensing			
Waterproof:	Probe and distal End up to 1 bar- 10.2m H2O			
Resistance:	Probe and distal End to oils and saline (5%)			

Interchangeable Objectives and Side View Tip Adapter SVTA				
Probe	DOV	FOV	DOF	CODE
4.0mm	0°	60°	7-50mm	
4.0mm	0°	60°	4-10mm	SD
4.0mm	0°	90°	15mm-∞	
4.0mm	0°	90°	10-30mm	SD
4.0mm**	90°	60°	5-45mm	SVTA
6.0mm	0°	60°	5mm-∞	BLACK
6.0mm	0°	60°	8mm-∞	YELLOW-B
6.0mm	0°	90°	5mm-∞	RED
6.0mm	0°	120°	3mm-∞	GREEN
6.0mm**	90°	60°	5-15mm	SVTA-CF
6.0mm**	90°	60°	15-50mm	SVTA-FF

Probe	DOV	FOV	DOF	CODE
8.0mm	0°	28°	25mm-∞	BLUE
8.0mm	0°	60°	5mm-∞	BLACK
8.0mm	0°	60°	8mm-∞	YELLOW-B
8.0mm	0°	90°	8mm-∞	SILVER-B
8.0mm	0°	90°	5mm-∞	RED
8.0mm**	90°	60°	5mm-∞	SVTA

DOV = Direction of view CF = Close focus
 FOV = Field of view FF = Far focus
 DOF = Depth of focus B = Bright objective lens
 SVTA = Side view tip adapter (90°DOV)
 **Compatible to FOV60°



iCapture DVR

iLED Scalable Modular Videoscope System

- Documentation unit
- 24/7 Operation
- Interchangeable with all Borescopes
- High-resolution 5" LCD screen
- Image capture, video recording to SD Card
- AC or rechargeable battery DC Operation
- Interchangeable Videoscopes
- Operable by left/right handed users
- Excellent image quality
- Interchangeable lenses
- Integrated LED
- Ergonomic handle
- Precise and tactile articulation control
- Temperature resistant up to 140°C
- Variable video interface
- Compact and versatile
- Water & dust resistant
- Easy to carry, easy to setup, light in weight
- Compact case IATA standard



Objective				
PROBE	DOV	FOV	DOF	CODE
4.0mm	0°	60°	7-50mm	
4.0mm	0°	90°	15mm-∞	
4.0mm**	90°	60°	5-45mm	SVTA
Interchangeable Objective				
PROBE	DOV	FOV	DOF	CODE
6.0mm	0°	60°	5mm-∞	BLACK
6.0mm	0°	60°	8mm-∞	YELLOW-B
6.0mm	0°	90°	5mm-∞	RED
6.0mm	0°	120°	3mm-∞	GREEN
6.0mm**	90°	60°	5-15mm	SVTA-CF
6.0mm**	90°	60°	15-50mm	SVTA-FF
PROBE	DOV	FOV	DOF	CODE
8.0mm	0°	28°	25mm-∞	BLUE
8.0mm	0°	60°	5mm-∞	BLACK
8.0mm	0°	60°	8mm-∞	YELLOW-B
8.0mm	0°	90°	8mm-∞	SILVER-B
8.0mm	0°	90°	5mm-∞	RED
8.0mm**	90°	60°	5mm-∞	SVTA

Operating unit
 Display: 5.0" (12.7cm) TFT colour/nonreflecting
 Operating system: Real-time operating system, with on-screen menu
 User interface: Direct action keys / function keys / arrow keys
 Languages: English, German, Polish, French, Spanish, Italian, Turkish
 Video interface: Composite video-out (BNC)
 Power supply, primary: Rechargeable Li-ion battery
 Operating time more than 2h
 Power supply, secondary: 12V adapter (optional accessory)

Documentation
 Saving/recording: Video recording
 Direct image capturing / Freeze modus
 MPEG4 (.avi)
 (with time and date stamp)
 Video format: BMP (.bmp) (with time and date stamp)
 Could be converted to JPG at PC
 Storage: SDHC memory card up to 32GB (FAT32)
 8GB /SDHC in device when delivered

Measurement
 Method: Comparative Measurement
Camera control
 Inegration modes: automatic frame integration
 standard / manuell / short / long
 Factory default or user defined
 White balance: Adjustable
 AGC level (gain control): Adjustable
 Gamma: Adjustable
Image control
 Zoom: 3.5X / 16 step variable
 Invert: Horizontal and vertical image inversion
 Brightness: Adjustable
 Contrast: Adjustable
 Colour: Adjustable
 Text annotation: Built-in text overlay generator
Construction
 Ergonomics: rotatable display unit
 System weight: 1,12kg
 Dimensions: 205mm X 180mm X 70mm
 Housing: Rugged PU,
 with integrated rubber shock caps

Operating environment
 System operating temp.: -13°F to 115°F (-25°C to +50°C)
 Storage temperature: -13°F to 140°F (-25°C to +60°C)
 Protection Class: IP 53
 Relative humidity: 95% max. - non condensing

Probe
 Sensor image: High Resolution 1/6" Image Sensor

Resolution:	total 752 x 582 px / 440.000 pxls		
Diameter:	4.0mm	6.0mm	8.0mm
Working length:	4.9 - 13.1ft (1.5 - 4.0 m)	4.9 - 13.1ft (1.5 - 7.5 m)	4.9 - 13.1ft (1.5 - 7.5 m)
Articulation (bending neck):	4-way / 360°	4-way / 360°	4-way / 360°
Integrated objective lens:	X	-	-
Interchangeable objective lens:	-	X	X
Side view tip adapter:	X (with 60° FOV lens)	X	X
Braid:	Multi-layer tungsten braid on PU jacket		
Interchangeable Objective Lens:	X		
Side View Tip Adapter:	X		
Braid:	Multi-layered tungsten braid		
Protection Class:	IP 53		

Illumination
 Tip: High Power LED
 Average lamp lifetime: approx. 15.000h

Operating environment
 Tip operating temperature: -13°F to 176°F (-25°C to +80°C)
 (284°F/140°C less than 5 Minutes)
 Storage temperature: -13°F to 140°F (-25°C to +60°C)
 Relative humidity: 95% max. - non condensing
 Protection Class: IP 55
 Waterproof: Probe and distal end
 up to 14.7 psi (1 bar- 10.2m H2O)
 Hydrostatic head of 5 meters
 Resistance: Probe and distal end
 to oils, saline (5%) and petroleum fluids

XLED Scalable Modular Videoscope System



iCapture DVR



alternative

+ Small diameter - 3.0 and 4.0mm

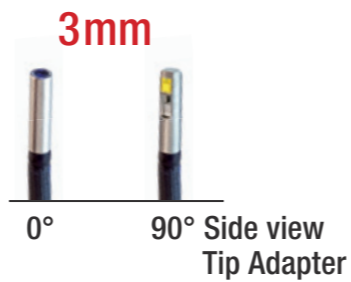
Perfect price performance ratio

Clear images by high resolution sensor

LED lighting for low power consumptions

Direction of view 0° direct and 90° Side view

Faster and more economical repair and service



3mm

0° 90° Side view
Tip Adapter



XLED

Documentation unit

Display size:	5.0" (12.7cm) TFT Colour
Display resolution:	VGA (640 x 480 pixel)
Operating system:	Realtime operating system, with on-screen menu
	Direct action keys / function keys / arrow keys
Language:	English, German, Polish, French, Spanish, Italian, Turkish
Video interface:	Composite video-out (BNC)
Power supply, primary:	Rechargeable Li-ion Akku
Power supply, secondary:	12V Adapter (optional accessory)

Storage

Video format:	MPEG4 (.avi) (with time and date stamp)
Image format:	BMP (.bmp) (with time and date stamp)
Storage:	SDHC Memory card up to 32GB (FAT32)

Image analysis

Method:	Comparative Measurement
---------	-------------------------

Camera settings

Functions:	White balance, AGC level, Gamma, Shutter, Gain Control, Time exposure
------------	---

Image control

Functions:	- 16 steps digital zoom - Horizontal and vertical image inversion - Brightness, contrast, colour
Text annotation:	Built-in text overlay generator

Device

Ergonomics:	rotatable display
Weight:	1.12kg
Dimensions:	205mm x 180mm x 70mm
Housing:	Rugged PU, with integrated rubber shock caps
System operating temperature:	-13°F to 115°F (-25°C to +46°C)
Storage temperature:	-13°F to 140°F (-25°C to +60°C)
Relative humidity:	95% less than - non condensing

X-LED Video interface

Connectable to:	iTool DVR , iCapture DVR, USB Frame Grabber, Composite Video
-----------------	--

Camera

Image sensor:	AIT CMOS Image sensor
Camera control:	Automatically

Probe

Braid:	Multi-layer tungsten on PU jacket
Tip operating temperature:	-13°F to 176°F (-25°C to +80°C)
System operating temperature:	-13°F to 150°F (-25°C to +46°C)
Storage temperature:	-13°F to 140°F (-25°C to +60°C)
Relative humidity:	95% less than - non condensing
Waterproof:	Probe and distal end up to 1 bar- 10.2m H2O
Resistance:	Probe and distal end to oils and saline (5%)

Probe

Diameter:	3.0 and 4.0mm	3.0 and 4.0mm
Working length:	1.5m	1.5m
Articulation:	2 way	2 way
Articulation L/R:	130°/130°	130°/130°
Integrated objective:	90° FOV	90° FOV
Weight:	90° version 280g	0° version 500g
Dimensions:	220 x 40 x 60mm	290 x 50 x 50mm

Illumination

Type:	DOV 90° side view LED on the tip	DOV 0° LED with fiberoptic
Control:	ON/OFF	ON/OFF
Colour temperature:	approx. 6500k	approx. 6500k
Average lamp lifetime:	approx. 500h	approx. 5000h

iFLEX

Flexible Fiberscope

High resolution
 Robust in use
 Optical image guide made from highly flexible fibre glass
 Focusable eyepiece

Direct view / side view lens
 Variable working lengths
 Many different probe diameters
 Angular deflection of the probe tip
 Diameter 2.4mm - 8.0mm

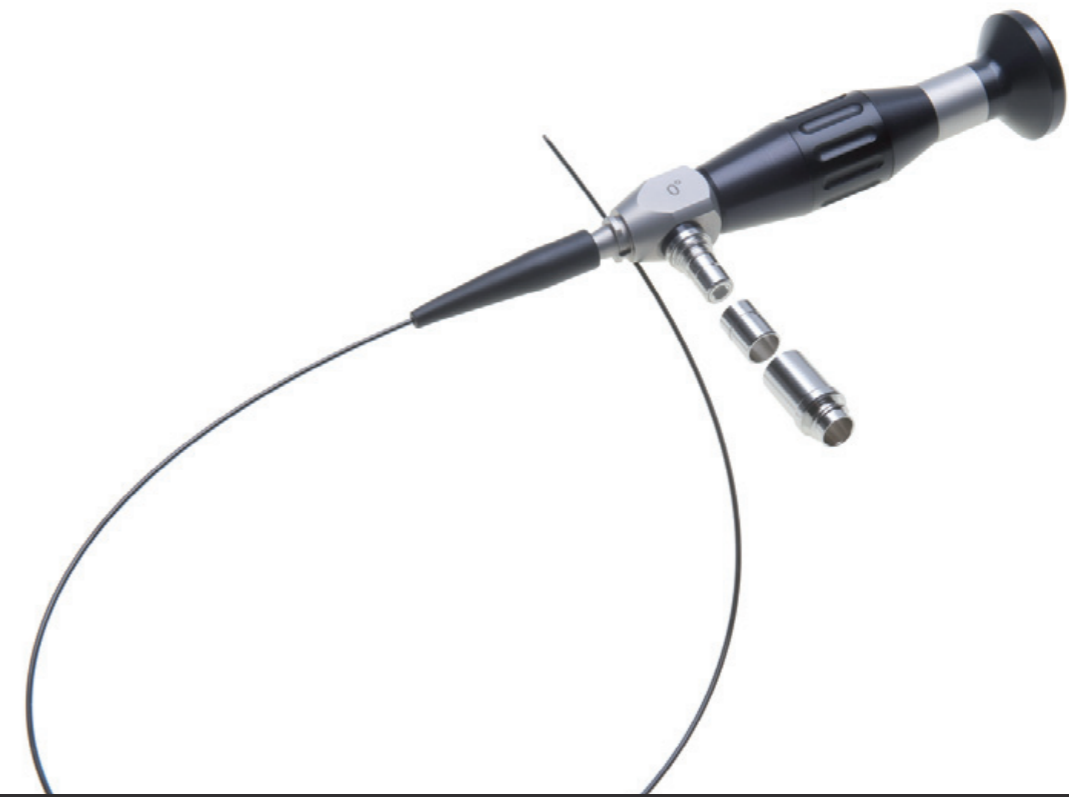


microFLEX

Flexible Fibrescope

Elegant, high resolution, flexible
 Variable working lengths
 Many different probe diameters
 Special designs possible on request

Optical image guide made from highly flexible fibre glass
 Diameter 0.5mm - 1.8mm



Probe Ø 2.4mm				
Lenght	Articulation	DoV	FoV	Pixel
0.4m	2 way ±120° L/R	0°	45°	6000
0.7m	2 way ±120° L/R	0°	45°	6000
1.4m	2 way ±120° L/R	0°	45°	6000
1.3m	2 way ±120° L/R	0°	45°	6000
Probe Ø 3.5mm				
Lenght	Articulation	DoV	FoV	Pixel
0.7m	2 way ±120° L/R	0°	50°	8000
1.0m	2 way ±120° L/R	0°	50°	8000
1.3m	2 way ±120° L/R	0°	50°	8000
1.5m	2 way ±120° L/R	0°	50°	8000
Probe Ø 4.0mm				
Lenght	Articulation	DoV	FoV	Pixel
1.0m	2 way ±120° L/R	0°/90°	50°	11500
1.3m	2 way ±120° L/R	0°/90°	50°	11500
1.5m	2 way ±120° L/R	0°/90°	50°	11500
2.0m	2 way ±120° L/R	0°/90°	50°	11500

Probe Ø 6.0mm				
Lenght	Articulation	DoV	FoV	Pixel
1.0m	2 way ±120° L/R	0°/90°	60°	12000
1.5m	2 way ±120° L/R	0°/90°	60°	12000
2.0m	2 way ±120° L/R	0°/90°	60°	12000
2.7m	2 way ±120° L/R	0°/90°	60°	12000
1.0m	4-way ±100° L/R - 160° UP - 130° DW	0°/90°	60°	12000
1.5m	4-way ±100° L/R - 160° UP - 130° DW	0°/90°	60°	12000
2.0m	4-way ±100° L/R - 160° UP - 130° DW	0°/90°	60°	12000
2.7m	4-way ±100° L/R - 160° UP - 130° DW	0°/90°	60°	12000
Probe Ø 8.0mm				
Lenght	Articulation	DoV	FoV	Pixel
1.0m	4-way ±100° L/R - 160° UP - 130° DW	0°/90°	60°	16000
1.5m	4-way ±100° L/R - 160° UP - 130° DW	0°/90°	60°	16000
2.0m	4-way ±100° L/R - 160° UP - 130° DW	0°/90°	60°	16000
2.7m	4-way ±100° L/R - 160° UP - 130° DW	0°/90°	60°	16000
Braid :	Multilayer tungsten			

Probe Ø	Working lenght	Bending Radius	DoV	FoV	Pixel	Braid
0.5mm	special designs up to 2000mm	min. 20mm	0°	70°	6000	PU
0.7mm	special designs up to 2000mm	min. 20mm	0°	70°	6000	PU
0.9mm	special designs up to 2000mm	min. 20mm	0°	70°	6000	PU
1.2mm	special designs up to 2000mm	min. 20mm	0°	70°	6000	PU
1.4mm	special designs up to 2000mm	min. 20mm	0°	70°	10000	PU
1.6mm	special designs up to 2000mm	min. 20mm	0°	70°	10000	PU
1.8mm	special designs up to 2000mm	min. 20mm	0°	70°	10000	PU

RIGID ENDOSCOPES

MULTI SWING PRISM

Robust, high precision optics
 Special rotation 370°
 Line of vision 7° to 133°
 Angle of vision 45°

Variable working lengths
 Many different probe diameters
 Special designs possible on request



INDUSTRIAL LINE

High precision, rigid, semi flexible
 Ideal for small cavities
 Durable design

Variable Working lengths
 Many different probe diameters
 Special designs possible on request



Ø 6.0mm			
Lenght	DoV	FoV	rotatable
175mm	-7° to 133°	45°	370°
245mm	-7° to 133°	45°	370°
315mm	-7° to 133°	45°	370°
385mm	-7° to 133°	45°	370°
455mm	-7° to 133°	45°	370°
945mm	-7° to 133°	45°	370°

Ø 8.0mm			
Lenght	DoV	FoV	rotatable
115mm	-7° to 133°	45°	370°
185mm	-7° to 133°	45°	370°
255mm	-7° to 133°	45°	370°
325mm	-7° to 133°	45°	370°
395mm	-7° to 133°	45°	370°
465mm	-7° to 133°	45°	370°
605mm	-7° to 133°	45°	370°

Ø 9.0mm			
Lenght	DoV	FoV	rotatable
205mm	-7° to 133°	45°	370°
305mm	-7° to 133°	45°	370°
405mm	-7° to 133°	45°	370°
505mm	-7° to 133°	45°	370°
605mm	-7° to 133°	45°	370°
705mm	-7° to 133°	45°	370°

Standard				
Ø 2.7mm				
Lenght	DoV	FoV	Type	
175mm	0°	80°	Starr	
175mm	0°	80°	Semi	
175mm	30°	80°	Starr	
175mm	30°	80°	Semi	
175mm	70°	80°	Starr	

Ø 4,0mm				
Lenght	DoV	FoV	Type	
175mm	0°	80°	Starr	
175mm	0°	80°	Semi	
175mm	30°	80°	Starr	
175mm	30°	80°	Semi	
175mm	45°	80°	Starr	
175mm	70°	80°	Starr	
302mm	0°	80°	Starr	
302mm	0°	80°	Semi	
302mm	30°	80°	Starr	
302mm	30°	80°	Semi	

With mirror tube				
Ø 1.9mm				
Lenght	DoV	FoV	Mirror tube	
up to 240mm	0°	45°	90°/2.7mm	

Ø 6.0mm				
Lenght	DoV	FoV	Spiegelrohr	
245mm	-7° to 133°	45°	370°	
315mm	-7° to 133°	45°	370°	
385mm	-7° to 133°	45°	370°	
455mm	-7° to 133°	45°	370°	
945mm	-7° to 133°	45°	370°	

Ø 8.0mm				
Lenght	DoV	FoV	Mirror tube	
115mm	-7° to 133°	45°	370°	
185mm	-7° to 133°	45°	370°	
255mm	-7° to 133°	45°	370°	
325mm	-7° to 133°	45°	370°	
395mm	-7° to 133°	45°	370°	
465mm	-7° to 133°	45°	370°	
605mm	-7° to 133°	45°	370°	

With mirror tube				
Ø 9.0mm				
Lenght	DoV	FoV	Mirror tube	
205mm	-7° to 133°	45°	370°	
305mm	-7° to 133°	45°	370°	
405mm	-7° to 133°	45°	370°	
505mm	-7° to 133°	45°	370°	
605mm	-7° to 133°	45°	370°	
705mm	-7° to 133°	45°	370°	

SERVICE ✓

As soon as possible and not longer than 15 working days

In event of a service, you have only to do 2 things:

Your device is defective!

1. Please send us the device.

At the latest after 48 hours we will provide you with a detailed cost estimate for the lump sum repair price.

2. Please approve this cost estimate

We will send you back the device free of charge after 15 working days at the latest .

[You can still plan with your device despite the failure!](#)

Special design possible

Ask for your special solution

You are looking for your special solution.

The possible areas of application for the industrial endoscopy and technical endoscopy are practically infinite.

We are certain that we already have the matching solution for your requirements or will be able to develop it.

IT Concepts is developer and manufacturer of:

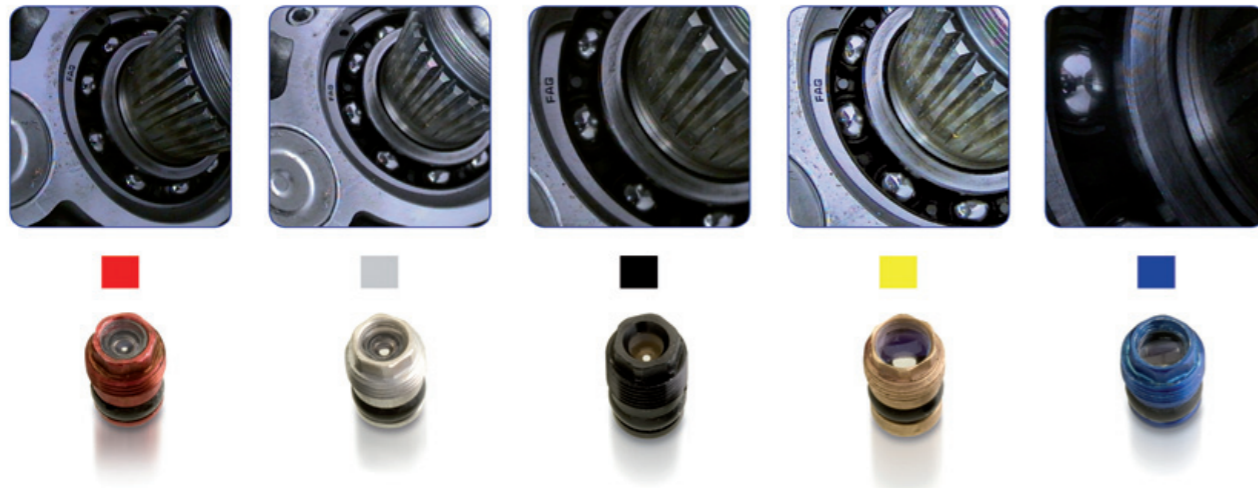
Cameras | Special Cameras | Video Electronic | Camera Components | Flexible Image Guides
Fiber Optics and optical Components | Precision Mechanics

[Describe your requirements to us!](#)



Interchangeable Objectives

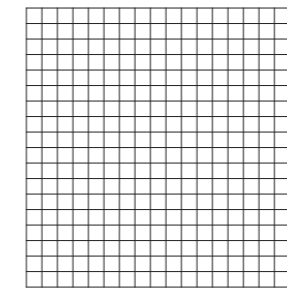
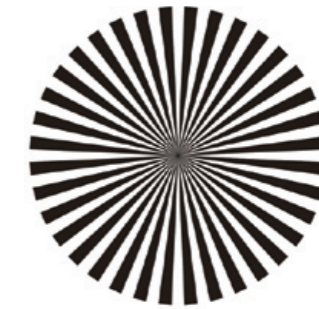
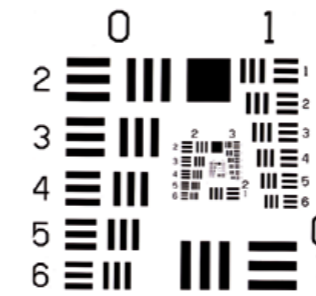
For different applications



SMART-FOCUS Close focus and far focus with only one objective lens.



TEST-Chart



Equipment and Accessories

It's not necessary anymore to buy another objective lens, if a different focal length is needed. In comparison with fix focus lenses, SmartFocus lenses save not only the complicated lens changing process, they also save additional/hidden costs. SmartFocus lenses with different field of view (FOV), f-stops (f-stop) and depth of field (DOF) are available.

Batterie Belt | USB 2.0 Frame Grabber | Inspection Guides | Device Clamp | Lightsources Cameras | Camera Adapters | Power Supply | Lightguide Cable | Lightguide Adapters Neck Holder | Cases | Side View Tip Adapter | Objectives | Special Working Tools | Centerizer | ...

MADE IN GERMANY

IT Concepts designs and manufactures worldwide with over 500 highly qualified and motivated employees electronic and optomechanical assembly groups and systems.

The product range extends from individual components for industrial and medical endoscopes over to video endoscopic systems and solutions for Remote Visual Inspection and Security.

For more than 10 years IT Concepts develops and produces all endoscopes „Made in Germany“ at the European headquarters Lahnau near Wetzlar, the City-of-Optics.

The top priority for the entire team in Lahnau is to provide customers with expertise and excellent service.

IT Concepts GmbH
Gewerbestr. 17
35633 Lahnau
Germany

Tel. + 49 6441 679 299 0
Fax + 49 6441 679 299 99
Mail info@itcworld.com