



# PHURONA

12 MEGAPIXEL SIDE-ENTRY CMOS CAMERA

Fast and effective.



12 MEGAPIXEL  
CMOS IMAGE SENSOR  
20 FPS IN FULL RESOLUTION  
50 FPS MAXIMUM SPEED

# PHURONA

12 MEGAPIXEL SIDE-ENTRY CMOS TEM CAMERA

**The PHURONA brings you all the interesting specifications of a 12 megapixel CMOS sensor now also for the side-entry port of your TEM.**

Our 12 megapixel TEM CMOS camera PHURONA (model S12U) for the typical side-entry port ("35mm") of a TEM provides up to 20 frames per second in its full 12 megapixel resolution, using a fast USB 3.0 interface to the computer.

It can reach up to 50 frames per second in 2x binning, which gives the user still a high resolution to conveniently watch fast moving details, e.g. for quick screening of a sample in a TEM.

The distortion minimized and custom designed lens ensures high light transfer efficiency and together with the sensitive camera electronics it makes observations at even low light conditions easily possible.

The typical drift of some specimens will be compensated by a convenient and reliable snapshot drift correction, which, even more, can be combined with averaging to reduce noise even further.

The PHURONA is the perfect side-entry camera, either for exclusive use or as an add-on camera for an existing bottom mount camera, providing a larger field of view .

Movie recording, smart averaging, Click-to-center™, high-dynamic range imaging (HDRI) - all come with the sophisticated state of the art imaging software RADIUS.

The latest CMOS technology of the PHURONA brings to you speed, sensitivity, high dynamic range and a large field of view. The CMOS image sensor shows no blooming and hence is all best suited also for diffraction images.

The PHURONA is the choice for customers looking for a fast and easy to use side entry camera with high image quality and a large field of view.

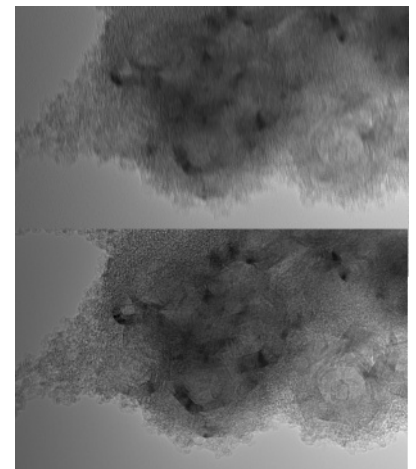
## APPLICATIONS

ALL LIFE AND  
MATERIALS SCIENCES

PATHOLOGY

ARCHIVING

DIFFRACTION



Carbon black at 25,000x - without and with drift correction.

## SPECIFICATIONS

Camera	PHURONA
Model	S12U
Sensor	CMOS
Image size (max.)	3,008 x 4,112 pixels
Binning	1x, 2x
Frame rate	20 fps at full resolution 50 fps max. speed
Camera coupling	Lens
Data interface	USB 3.0
Operating system	Windows 10 (64 bit)
Imaging software	RADIUS 2.0
Mounting position	Side-entry, retractable ("35 mm" port)
Available options	Diffraction beam stop (w/ costs)



EMSIS GmbH

Mendelstraße 17

48149 Münster, Germany

Phone: +49 (0)251 297962-0

Fax: +49 (0)251 297962-90

E-mail: info@emsis.eu

[www.emsis.eu](http://www.emsis.eu)